

Service manual

bestaqua 14 ROC

R&D department

27.02.2019



CONTENTS

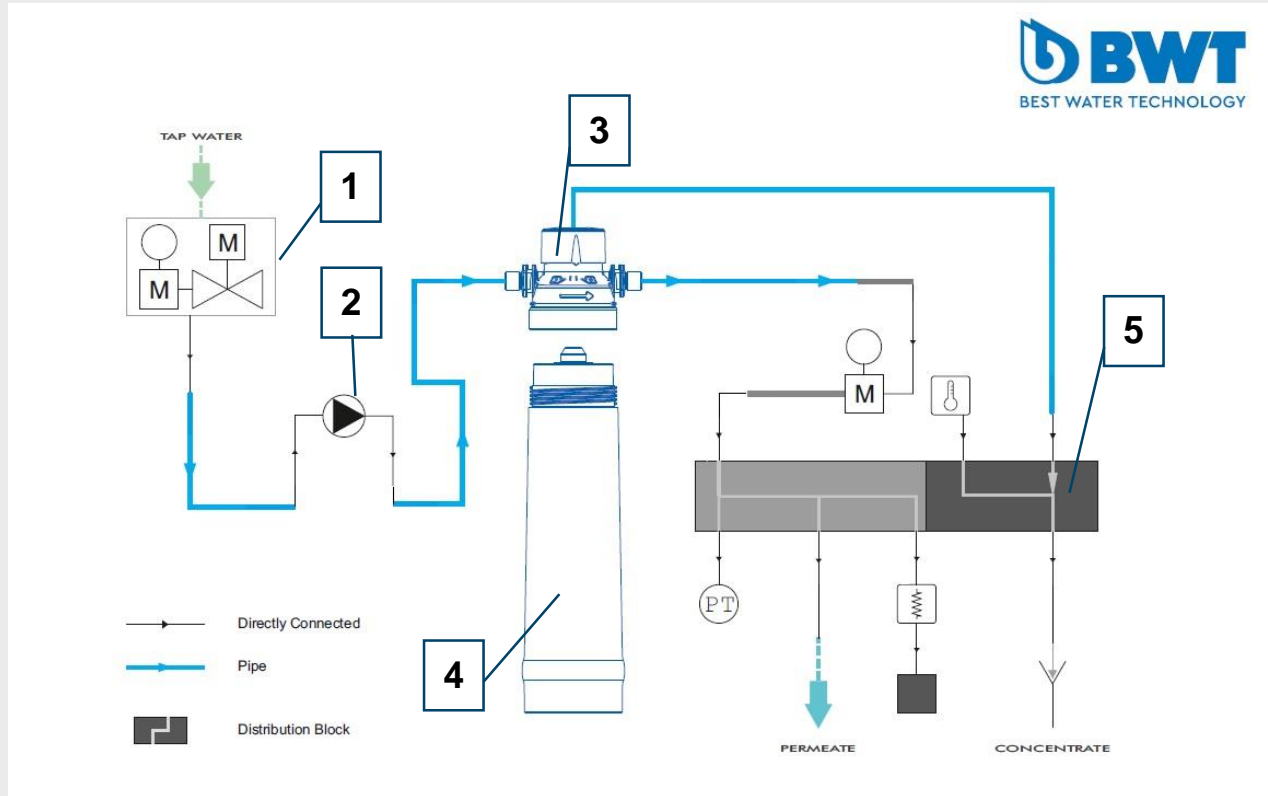
- I. Spare parts overview
- II. Schematic drawing bestaqua 14ROC
- III. APP indication
- IV. Exchange electronic controller & power supply
- V. Exchange booster pump
- VI. Exchange mixing block
- VII. Exchange RO-filterhead

Spare part overview 14ROC

article code	water+more code	part description
822013	RS01Y01A00	Booster Pump 230V bestaqua 14ROC
822014	RS01Y02A00	Inlet Solenoid Valve bestaqua 14 ROC
822015	RS01Y03A00	Mixblock complete bestaqua 14 ROC
822016	RS01Y04A00	JG Kit complete bestaqua 14 ROC
822017	RS01Y05A00	Cabel Kit complete bestaqua 14 ROC
822012	RS01Y06A00	RO-Head parallel bestaqua 14 ROC
822018	RS01Y07A00	Electronic Controller bestaqua 14 ROC
822019	RS01Y08A00	Plastic Cover Kit complete bestaqua 14 ROC
822020	RS01Y09A00	Screw Kit complete bestaqua 14 ROC
822021	RS01Y10A00	Leakage Sensor bestaqua 14 ROC
822022	RS01Y11A00	Conductivity Probe bestaqua 14 ROC
822023	RS01Y12A00	Temperature Probe bestaqua 14 ROC
822024	RS01Y13A00	Pressure Transmitter bestaqua 14 ROC
822025	RS01Y14A00	Permeate Flowmeter bestaqua 14 ROC
822026	RS01Y15A00	Electronic power switch bestaqua 14ROC
822009	RS00Y61A00	BWT bestaqua 14 (membrane)



Flow-scheme bestaqua 14ROC



POS	Article code	picture	description
1	822014/ RS01Y02A00		Inlet Solenoid Valve bestaqua 14 ROC
2	822013/ RS01Y01A00		Booster Pump 230V bestaqua 14ROC
3	822012/ RS01Y06A00		RO-Head parallel bestaqua 14ROC
4	822009/ RS00Y61A00		Bestaqua 14 ROC Membrane
5	822015/ RS01Y03A00		Mixblock complete bestaqua 14 ROC

APP display INFO

A required service is indicated in the APP as displayed.

The LED on the unit turns to „RED“ if a service is required

The service interval and the counters can be changed in the app settings.

How to change the settings can be found in the manual on page 10



APP display INFO

Faults are indicated with a red circle.

More information about the different fault indications can be found in the manual



If a fault occurs the status LED turns to RED and an acoustic signal appears. To get more information about the origin of the certain fault please connect the unit with a smartphone. On the following slides the required service-actions are described step by step.

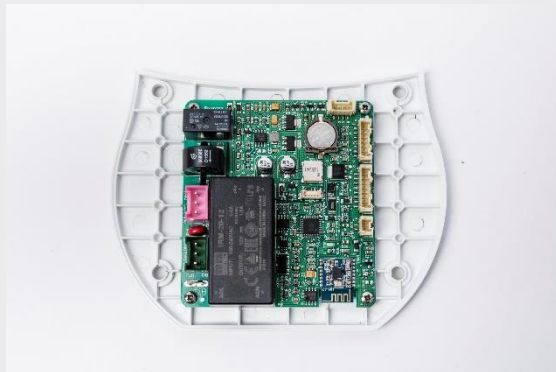
Step-by-Step Service Guideline 14ROC

Exchange of control-board & power supply

Required tools:

- 1 x Allen-key size: 3
- 1 x Small flat-head screwdriver

Component to be changed:



Electronic Controller bestaqua 14 ROC -
822018 / RS01Y07A00

Work steps to change the controller board:

1. Disconnect water supply
2. Disconnect power supply
3. Unscrew the back- top cover of the unit (ABB1)
4. Carefully remove the cover and unplug all cables (ABB2)
5. Change the controller and plug the cables back in (ABB3)

Exchange of controller and power supply



ABB1: remove screws of back- top cover



ABB2: carefully remove cover and unplug all cables

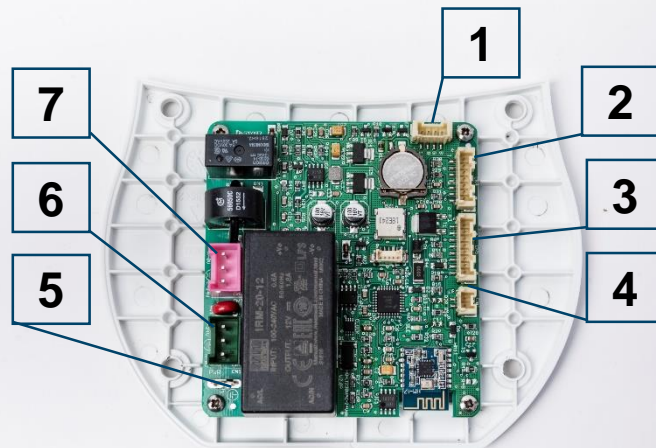


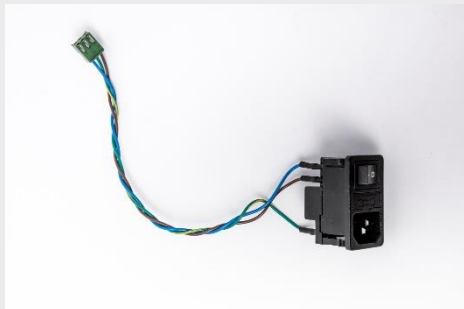
ABB3: Plug allocation of control board

No	Description
1	Status LED
2	Inlet solenoid valve & flowmeter
3	Mixblock complete bestaqua 14 ROC
4	Leakage probe
5	Ground cable
6	Power supply (GREEN)
7	Booster pump (PINK)

Exchange of controller and power supply



Zu wechselnde Komponente:



Electronic power switch bestaqua 14ROC -
822026 / RS01Y15A00

Work steps to change electronic power switch:

1. Disconnect water supply
2. Disconnect power supply
3. Unscrew the back- top cover of the unit (ABB1)
4. Carefully remove the cover und unplug the green plug (ABB2)
5. Carefully push out the power switch box by gently pressing the clamp – works best with a flat-head screwdriver
6. Position the new power switch and push it in until you hear a „klick“.
7. Reconnect the power supply (green plug) and close the cover.

Exchange of booster pump

ATTENTION: the warranted lifetime of the booster pump is 1200 operating hours!

Required tools:

- 1 x Allen-key size: 3
- 1 x Small flat-head screwdriver
- 1 x Small Phillips head screwdriver

Component to be changed:

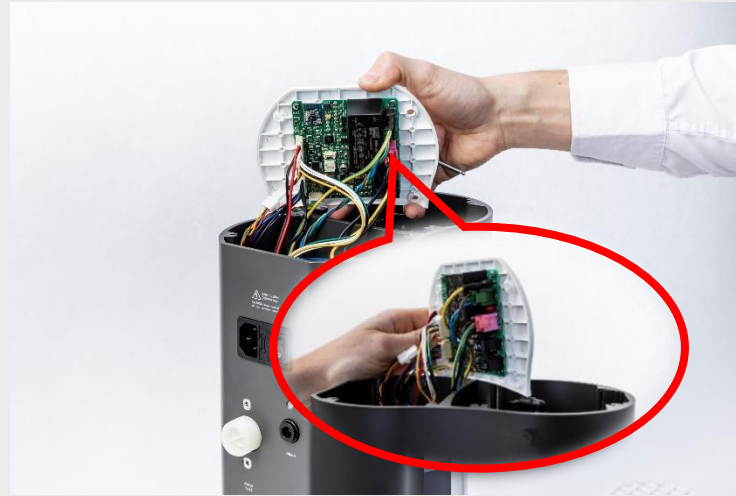


Booster Pump 230V bestaqua 14ROC –
822013 / RS01Y01A00

Work steps to change booster pump:

1. Disconnect water supply
2. Disconnect power supply
3. Remove membrane cartridge
4. Unscrew and remove the back- top cover of the unit and remove the “PINK” plug (ABB1)
5. Lay down the unit horizontally and slightly pull out the pump assembly (about 2cm; do not apply strong force!!)
6. Disconnect inlet- and outlet JG-elbow .
7. Carefully slide out the pump assembly (pump sitting on the INOX mounting plate) and dismount the pump from the INOX mounting plate Mount the new pump on the mounting plate
8. Thread the cable back in the unit and gently push the pump back inside the cabinet.
9. Push the JG-elbows back in and plug in the “PINK” power supply

Exchange of booster pump

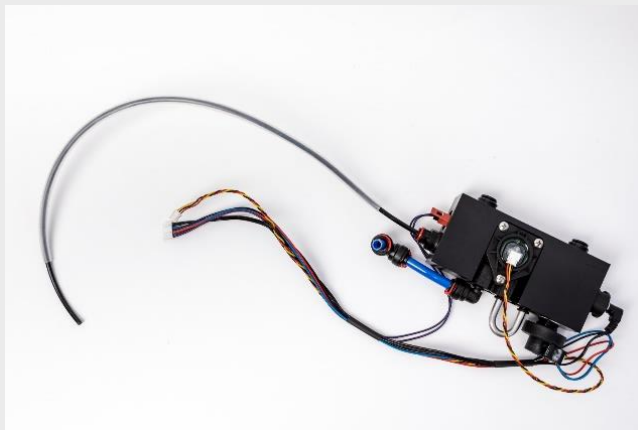


Exchange of mixblock

Required tools:

- 1 x Allen-key size: 3
- 1 x Small flat-head screwdriver
- 1 x TORX-screwdriver size: T9

Component to be changed:

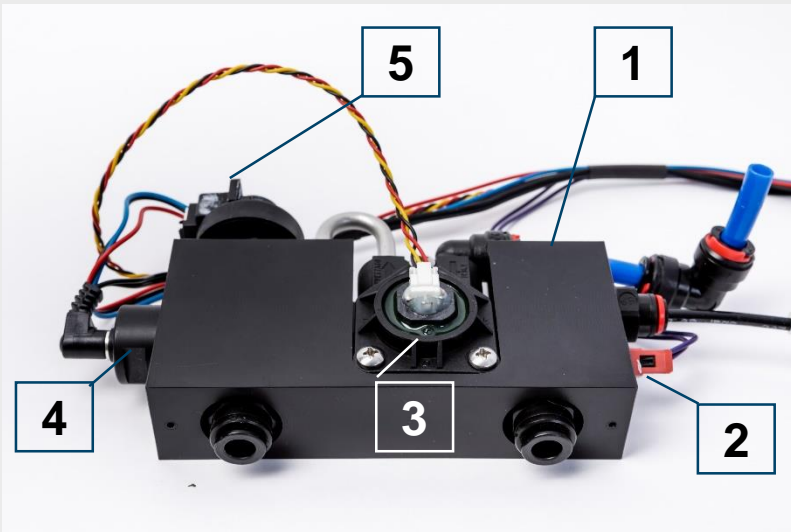


Mixblock complete bestaqua 14 ROC -
822015 / RS01Y03A00

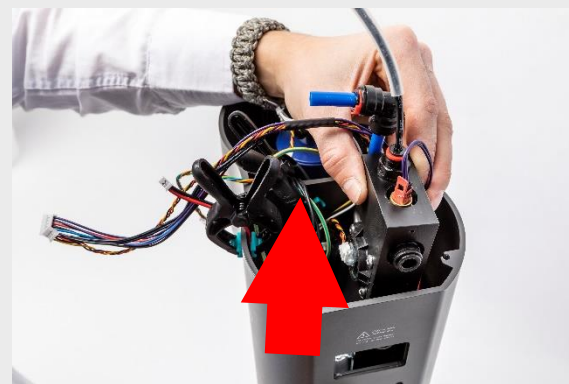
Work steps to change booster pump:

1. Disconnect water supply
2. Disconnect power supply
3. Remove membrane cartridge
4. Unscrew and remove the back- top cover of the unit and disconnect all plugs (ABB1 & ABB2)
5. Remove power supply (page 9)
6. Disconnect permeate- (6mm JG blue) and concentrate (4mm JG black + silicone hose) hose from the RO-filterhead
7. Remove the two TORX9 mounting screws from the backside of the unit and take out the complete mixblock-assembly.

Exchange of mixblock



No	Description
1	Mixblock complete bestaqua 14 ROC
2	Temperature Probe bestaqua 14 ROC
3	Permeate Flowmeter bestaqua 14 ROC
4	Conductivity Probe bestaqua 14 ROC
5	Pressure Transmitter bestaqua 14 ROC

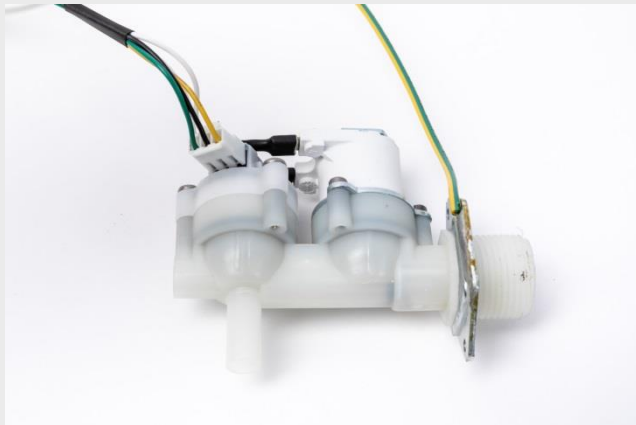


Exchange of inlet solenoid valve / flowmeter

Required tools:

- 1 x Allen-key size: 3
- 1 x Small flat-head screwdriver
- 1 x TORX-screwdriver size: T9/T20

Component to be changed:

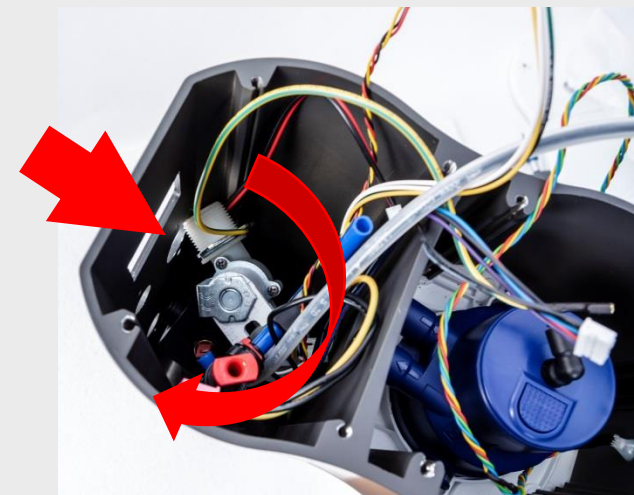
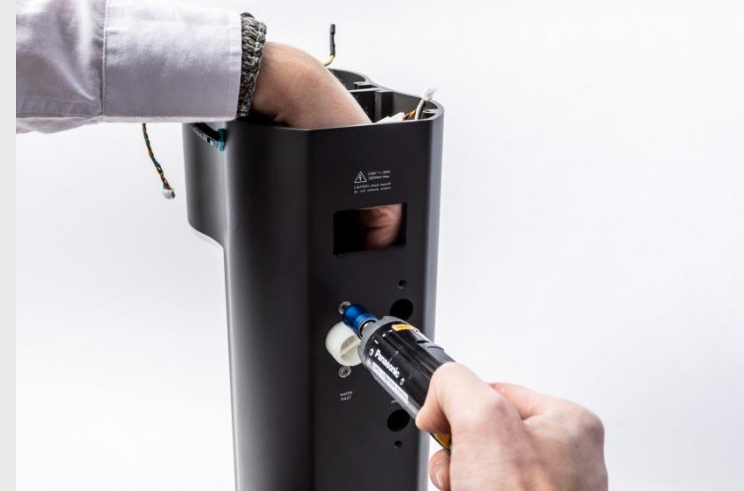
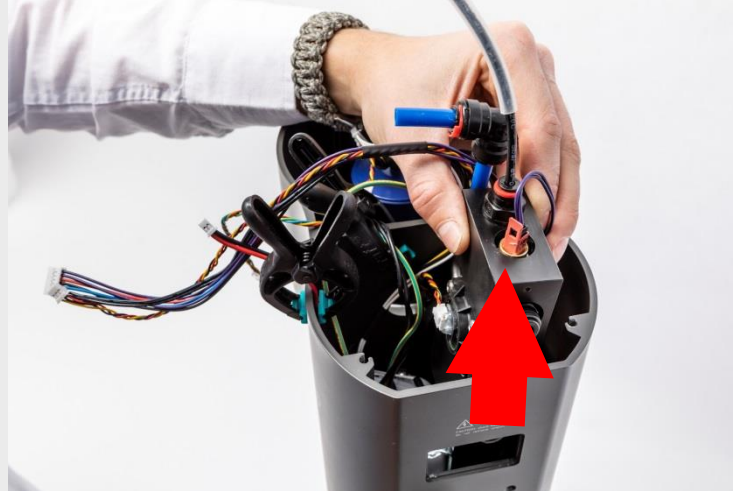


Inlet Solenoid Valve bestauqa 14 ROC -
822014 / RS01Y02A00

Work steps to change inlet solenoid valve

1. Disconnect water supply
2. Disconnect power supply
3. Unscrew and remove the back- top cover of the unit and disconnect all plugs (ABB1 & ABB2)
4. Remove power supply (page 9)
5. Remove mixblock (page 12)
6. Remove bottom cover and disconnect pump-inlet fitting
7. Remove T20 screws on the backside and gently pull the valve out
8. Reconnect the pump inlet tube on the new solenoid valve and follow the previous steps back

Exchange of inlet solenoid valve / flowmeter



Exchange RO-head

Required tools:

1 x Allen-key size: 3

1 x Small Phillips-head screwdriver

Component to be changed:

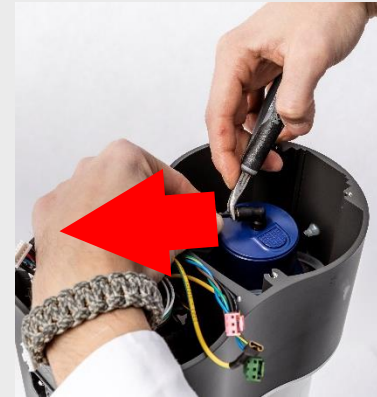


RO-Head parallel bestaqua 14 ROC -
822015 / RS01Y03A00

Work steps to change RO-head:

1. Disconnect water supply
2. Disconnect power supply
3. Remove membrane cartridge
4. Unscrew and remove the front and back top cover of the unit
5. Disconnect JG connectors – Inlet 8mm blue; outlet 8mm black; concentrate 4mm black
6. Unscrew the four screws off the two INOX mounting brackets.
7. Change the head and follow the previous steps back

Exchange RO-head



Abdeckungen, danach Arretierungsbleche beim Kopf abschrauben, „Konzentrat-Feed-Permeat“ Schläuche vorsichtig entfernen. RO-Kopf parallel herausnehmen und austauschen.

