

Installation Guide

BWT Desinfecton S and X anti-Legionella unit



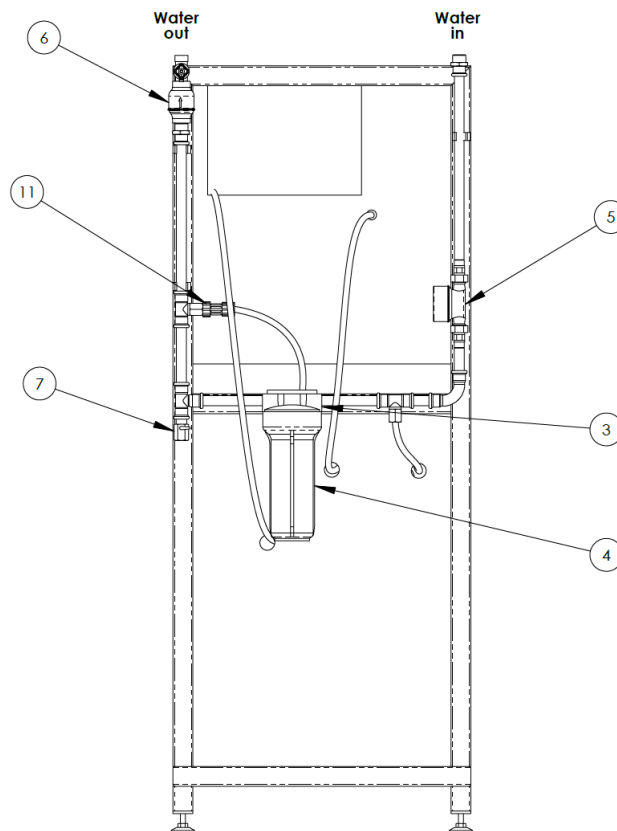
Quick guide – for simple and fast commissioning

Thank you for having the confidence in coherence with your purchase of our BWT Desinfector. The following Quick guide will describe how the installation and the commission are done easy and fast.

1	Check BWT Desinfector.....	3
2	Check water and brine pumps	4
3	Check Salt tank.....	5
4	Check dosing pump	5
5	Check Carbon prefilter	6
6	Commissioning of pretreatment	6
6.1	Pretreatment with BWT Bestprotect.....	6
6.2	Pretreatment with BWT KVD613.....	7
7	Set up of water hardness for pretreatment in BWT Desinfector	9
8	Filling brine tank with water before production.....	9
9	Priming of peristaltic pumps.....	10
10	Start of Neuthox production	11
11	Control of free chlorine (FAC) in treated water	11
12	Adjustment of Proportional dosing	11

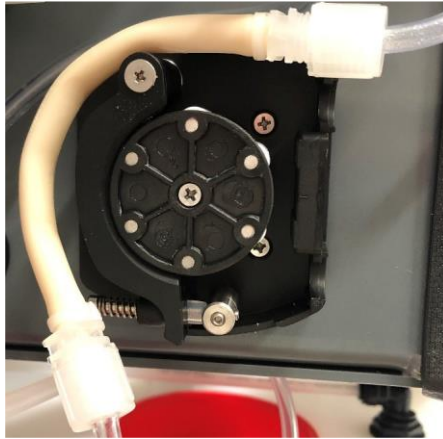
1 Check BWT Desinfector

1. Check for transport damages.
2. Check water installation.
3. Inlet water on correct side (Water in)
4. Treated water on correct side (Water out)
5. Check water supply for pretreatment and further to the system.
6. Check that water hoses are correctly mounted from water main to pretreatment.
7. Check water hose from pretreatment to BWT Desinfector is correctly mounted.

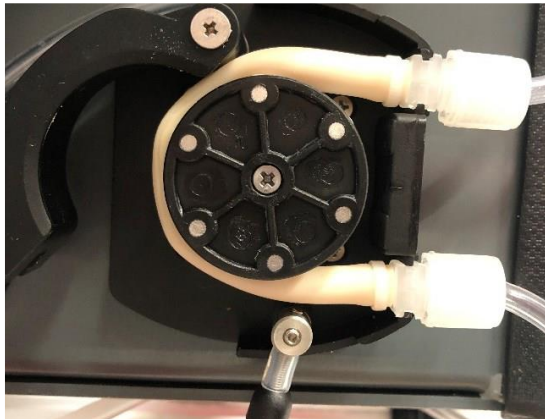


2 Check water and brine pumps

1. Open BWT Desinfectant door with included key
2. Open quick-release clip on the back of pumps
3. Assemble hoses in pumps.
4. Close quick-release clip on the back of pumps
5. Mount Shield bracket on top of the pump.



Before



After

Quick guide – for simple and fast commissioning

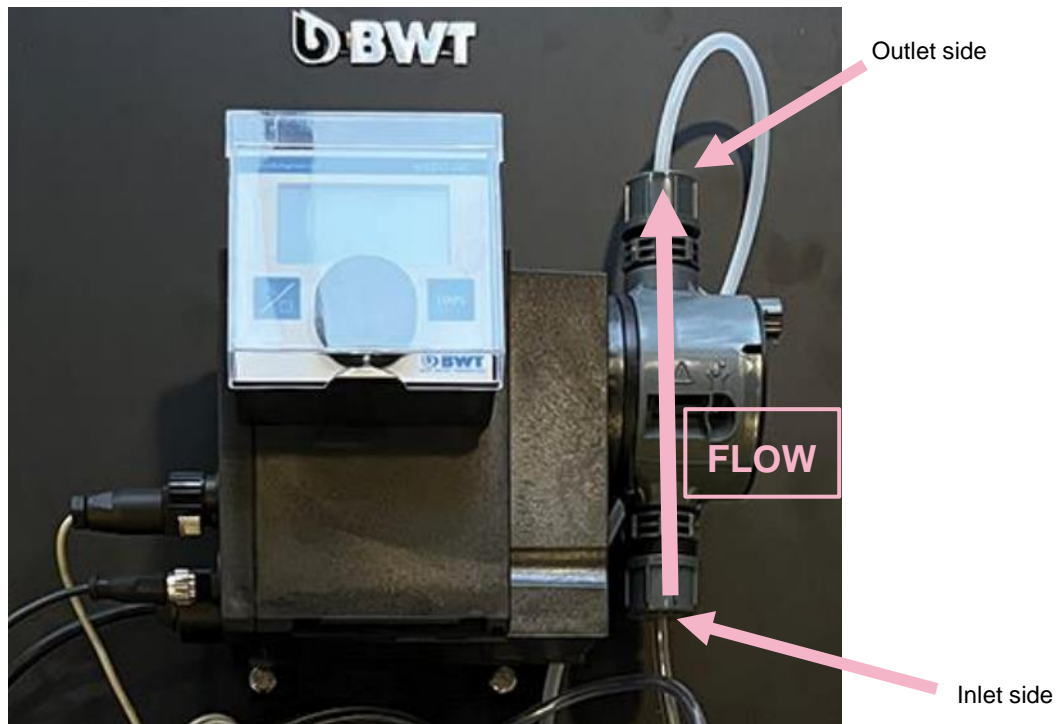
3 Check Salt tank

1. Fill Salt tank with BWT salt tablets, do not overfill.
2. Put the red lid back again.



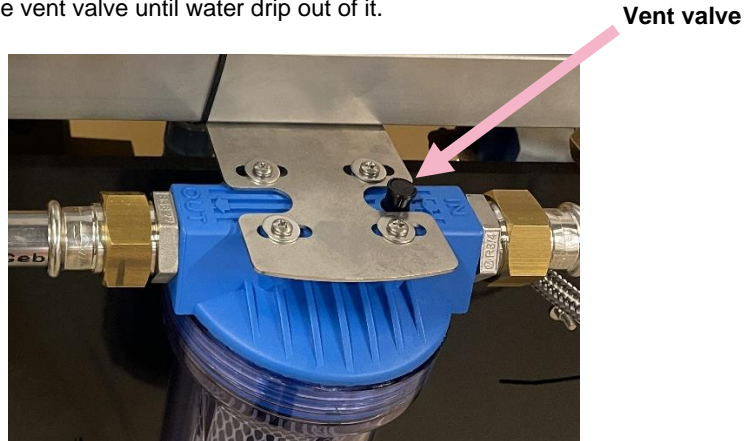
4 Check dosing pump

1. Check that the hose from tank is correctly mounted to dosing pump inlet side
2. Check that the hose is correctly mounted from dosing pump outlet side to dosing nipple.



5 Check Carbon prefilter

1. Open for inlet water to Desinfector.
2. Check for leaks.
3. Vent prefilter housing on the back of Desinfector.
4. Press the vent valve until water drip out of it.



6 Commissioning of pretreatment

6.1 Pretreatment with BWT Bestprotect

- 1 BWT Bestprotect cartridge must be flushed before use, this is done by discarding the first 5 liters.
- 2 Turn the vent valve.
- 3 After discarding 5 liters, close the flushing valve again.
- 4 Measure hardness of water before and after filter.
- 5 Save results for later use.



6.2 Pretreatment with BWT KVD613

- 1 Assembly the BWT KVD613
 - 2 Connect water hoses between BWT Desinfecton and BWT KVD613.
 - 3 Check that the inlet pressure is between 2.5 and 7 bar.
 - 4 The brine (salt) valve has been preadjusted in our factory, but it should always be checked that the float is halfway up the shaft, as a minimum when looking from the top of the float. The water must be above the grid plate in order to be in contact with the salt. The yellow plastic safety mechanism under the float cup must be pressed home.
 - 5 The valves on the in- and outlet side and the bypass valve (if fitted) must be closed.
 - 6 Open the valves at the intake side a little, so that the filter slowly fills with water. At the same time water will be filled into the brine tank, by means of the brine valve.
 - 7 Put the one and then the other tank in back- wash position for a while to get any air out of the system.
 - 8 This is done by pressing down the crosshead screw in the middle of the automatism and simultaneously turning it clockwise. Check that this makes the water run out of the discharge hose to drain.
 - 9 When the air is out, put the filter in operation (at position 12 or 6 o'clock) by turning the crosshead screw once more.
 - 10 Then open the valves on the outlet and intake sides completely.
 - 11 Check that water runs into the brine tank. Check that the water is above the grid plate (approx. 5 cm above).
 - 12 Fill up the tank with BWT salt tablets.
 - 13 Normally there shall be enough salt in the cabinet to cover the water completely.
 - 14 Now the plant is ready for service and will supply softened water instantly.
 - 15 Measure hardness of water before and after filter.
- Check original BWT KVD 613 manual for other information



Quick guide – for simple and fast commissioning



Quick guide – for simple and fast commissioning

7 Set up of water hardness for pretreatment in BWT Desinfector

- 1 Turn on power to BWT Desinfector.
- 2 Softening setting
- 3 On HMI, Menu → Configuration → Softener settings
- 4 Enter the measured (or provided) water hardness
- 5 Select BWT - XL
- 6 With KVD613
- 7 Set Water hardness to 0
- 8 Select BWT - 2XL



8 Filling brine tank with water before production

- 1 In Menu, press Configuration → Manual operation
- 2 To open water to the brine tank, press Main water flow "Off" until it turns green "On"
- 3 When the brine tank is 2/3 full, put Main water flow back to "Off"

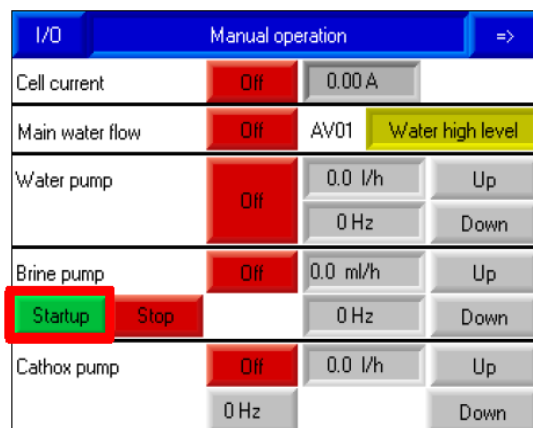
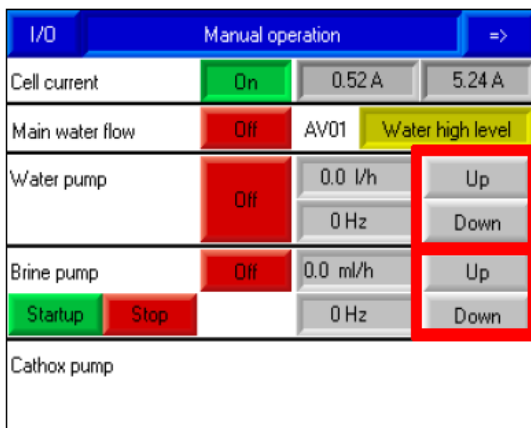
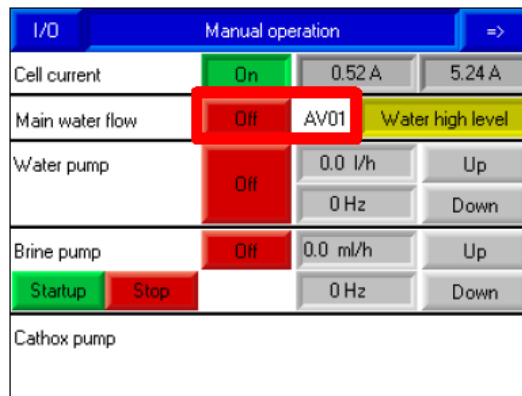
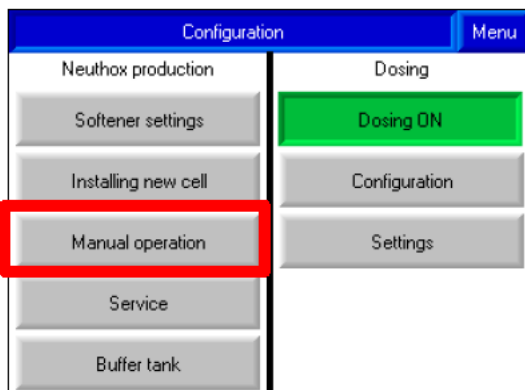
IMPORTANT THAT THIS IS DONE CORRECTLY

The screenshot shows the 'Manual operation' screen. It has a blue header with 'I/O' on the left and 'Manual operation' in the center, with a right-pointing arrow on the right. Below the header is a table with the following rows:

Cell current	On	0.52 A	5.24 A
Main water flow	Off	AVD1	Water high level
Water pump	Off	0.0 l/h	Up
		0 Hz	Down
Brine pump	Off	0.0 ml/h	Up
	Startup	Stop	0 Hz
			Down
Cathode pump			

9 Priming of peristaltic pumps

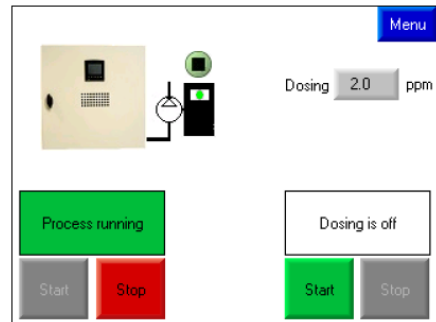
- 1 This is done from “**Manual operation**” in the Configuration Menu.
- 2 Press water pump “**Off**” so it turns green “**On**”
- 3 Flow can be adjusted up and down as needed.
- 4 When the water passes the water pump, turn off again
- 5 Press Brine pump “**Startup**”
- 6 Flow can be adjusted up and down as needed.
- 7 When the water passes the water pump, turn off again by pressing “**Stop**”



Quick guide – for simple and fast commissioning

10 Start of Neuthox production

- 1 Press Start on the left side to start production.
- 2 When Neuthox tank is full, press Start on the right side to start dosing
(Dosing starts when there is water consumption and water meter is sending pulses to the BWT Desinfector)

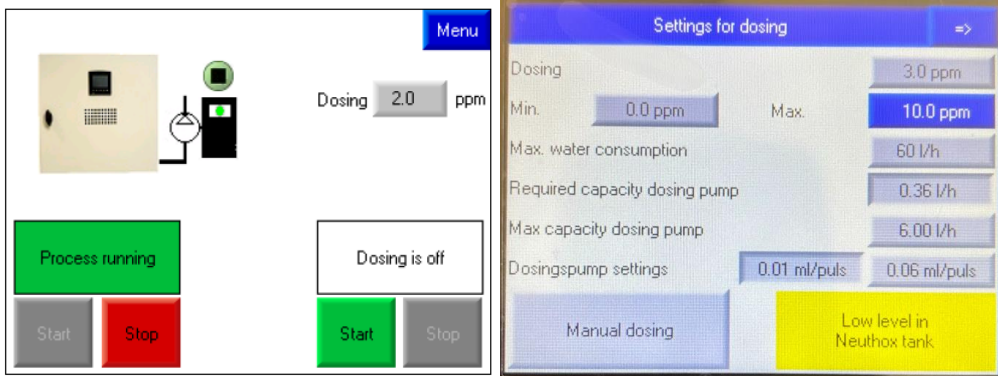


11 Control of free chlorine (FAC) in treated water

- 1 Open test valve on the side of BWT Desinfector and wait for the dosing pump to start dosing.
- 2 Test the treated water with included free chlorine test strips.
- 3 When free chlorine is detected, the test strips will change color to light blue, the result should be approximately 0.5 ppm.
- 4 If the desired result is achieved, Congratulations, Job done!
- 5 If the desired result is not achieved, go to step 12)

12 Adjustment of Proportional dosing

- 1 Adjust "Dosing" up or down to match the measured value.
- 2 Let water run for 5 minutes and measure if free chlorine is at approximately 0.5 ppm.
- 3 Repeat dosing adjustment if necessary.



$(u \times d \times 2) / p \geq 10$	
u: L pr. pulse from water meter	
d: Desired dosage in ppm	
p: mL per pulse to the dosing pump	
0,1 liter pr puls	
ppm	ml Neuthox pr puls
1	0,02
2	0,04
3	0,06
4	0,08
5	0,1
6	0,12

If free chlorine is at 0,5ppm in treated water the commissioning of BWT Desinfector is done!