

# Manual DUC23



## 1 Introduction to DUC23

"BWT DUC23 is a BWT Unit CleanR 2000 distribution system for the dental Industry and it ensures the water processed has no harmful microorganisms. The system operates on pulse signals given to it from the water meter. The water meter registers 10 impulses per 1 liter of water flowing through it. Therefore, we recommend the following standard settings for the system. Provided the water used pre-dosing is reverse osmosis water. If using

0.05 ml/pulse: this amounts to a dosage of 1 ppm and is a Standard preventative installation, without previous or current encounters with legionella in the existing plumbing.

0.1 – 0,2 ml/pulse: this amounts to a dosage of between 2 and 4 ppm Installation in systems with existing Legionella challenges.

We recommend a dosage between 1 - 2 ppm. Please note, that these parameters are subject to be adjusted in conjunction with the weekly water tests. These recommendations are provided the water used pre-dosing is reverse osmosis water. If the water is untreated or unfiltered the dosing will need to be dialed in for more information, please read the chapter on general maintenance.

## 2 Settings and general information

Under the settings menu, many parameters can be changed. The most important settings are the signal, language, and dosage. If experiencing issues with the device, please make sure the signal "pulse" is always the one chosen. This can be found in the settings menu under operational mode.

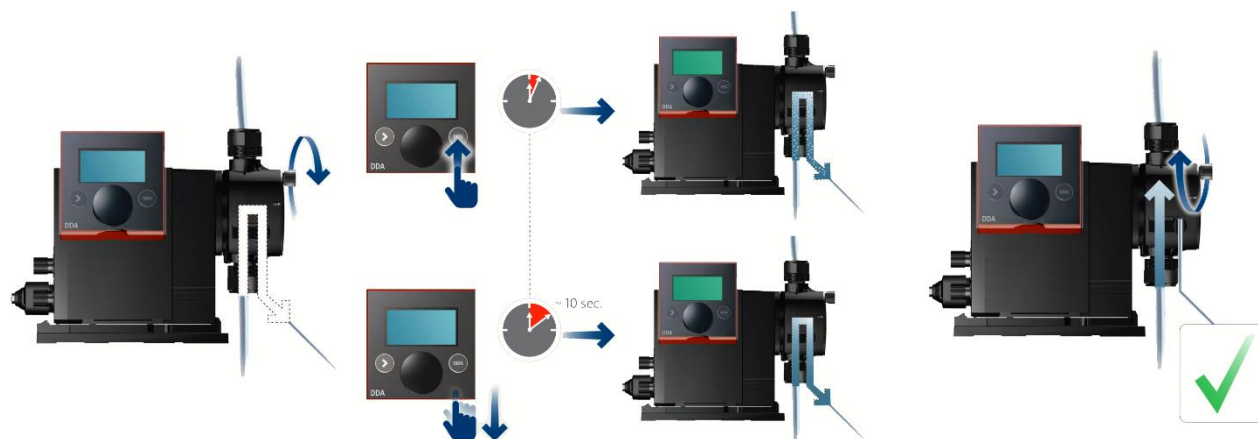


It is crucial to ensure the BWT Unit CleanR 2000 is always being distributed into the system. Therefore, the DUC23 screen always displays a color based on the current level of the container. This feature is displayed with 4 different colors and makes planning the next BWT Unit CleanR 2000.

Blue: The container's content is high, and the system is on pause.	Green: The container's content is high, and the system is running normally.	Yellow: The container content is around 1/2, and replacement should be planned.	Red: The container is around 1/3 of its content and needs to be replaced very soon.
--	---	---	---



After startup, service, or a prolonged period of inactivity, air may have entered the system. When air is in the system, the pump cannot push the water through the piping. Removing air pockets from the system can be done by turning the air valve indicated in the picture. Then hold down the 100% button until the air and water come through the air exhaust in the pump. When only water comes out, close the valve by turning it.



Technical specification	
Net.weight	5,5 KG.
Size H/W/D	428mm/400mm/190mm
Water connection	In/Out 3/4"
Power connection	100-240V 50-60Hz 22w

### 3 General maintenance

To ensure proper water quality and that the container is not empty, weekly water tests should be performed on the dental chairs. For this purpose, we recommend the BWT "Free chlorine strips".

Measurements should be taken at the same time of day every time it is done. We recommend testing in the afternoon to ensure the most accurate results.

Record the measured values in ppm on the chart.

We recommend the measured result to be at least 0,2 ppm.

if your measurements are lower than our recommendation adjust the dosage according to Chapter 1.

If the dosage continues not to be within the recommended limits, please contact your local BWT branch. Place a minus sign (%) for measurements without any color change and remember to record on the chart when switching out the BWT Unit CleanR 2000 containers.



We recommend using a service kit every year and atleast once every two years. This is to ensure the DUC23 dossing accuracy and reduce the chance of faults and errors in the system.

Order Number	Consumables
701957041	BWT Unit CleanR 2000 5L.
701978030	FREE CHLORINE STRIPS 0,0-2 PPM

Order Number	Service kit
454100076	annual service kit for BWT pump

### 4 Safety

When performing maintenance on the BWT DUC23 it's important to handle the equipment with care.

Please consult the safety data sheet if you have any concerns about the compound BWT Unit CleanR 2000. It is also recommended to always disconnect the device when performing maintenance as to avoid any risk of electrocution.

