

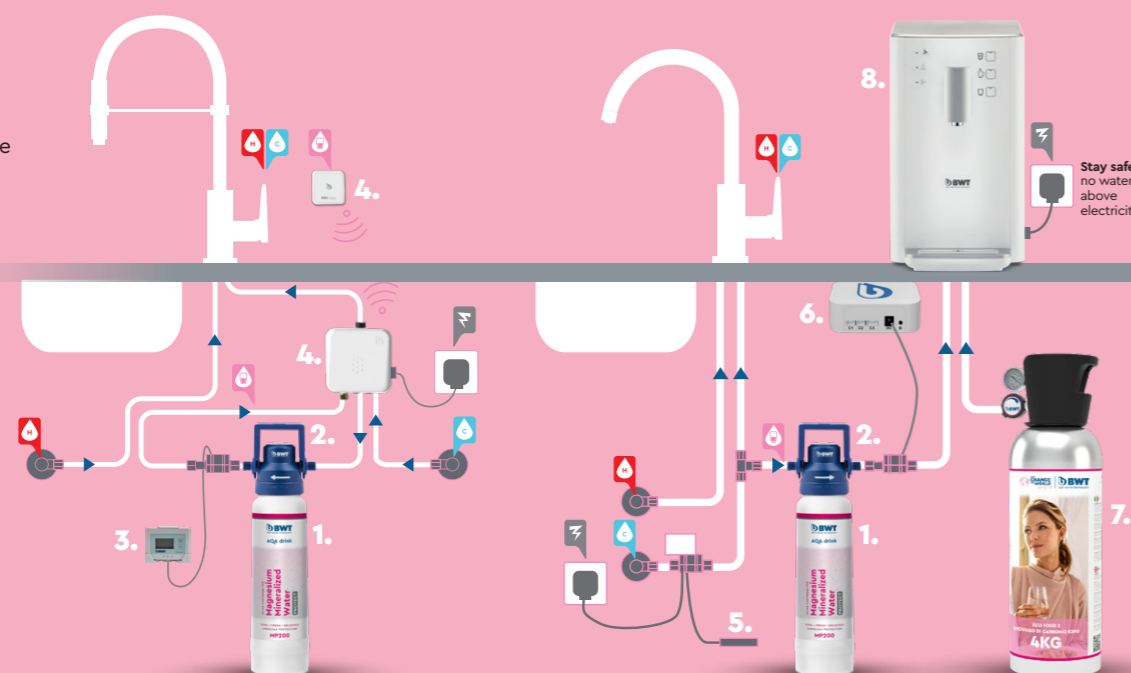
FILTER HEADS & MONITORING SYSTEMS

| | ITEM N° |
|--------------------------------------|-----------|
| AQA drink Filter head ST 3/8" | 812580 |
| AQA drink Filter head PA 8mm | 812590 |
| AQA Monitor BWT | 812641 |
| Flowmeter FS-2330 Set (0,2-5,0 l/m) | 125553827 |
| Flowmeter FS-2440 Set (0,8-15 l/m) | 125553828 |
| Flowmeter FS-6600 Set (2-60 l/m) | 125553829 |
| Mixo + Remote control | 125591198 |
| Water Block | A27013 |
| AQA stop | 812184 |
| b.Connect box (GSM und WiFi) | 125553830 |
| Power Adapter 5V/2A, AC/DC connector | 125553831 |



FLOW SCHEME

1. AQA drink filter cartridge
2. AQA drink filter head
3. AQA Monitor BWT
4. Mixo
5. AQA stop
6. B.Connect
7. CO₂ cylinder
8. Water dispenser



BWT CLIMATE BOTTLES, GLASS BOTTLES AND GLASSES FOR YOUR TABLE AND GUESTS

Enjoying best drinking water experience with your eyes. Get inspired from the broad collection of bottles and glasses we can offer.



BWT AQA DRINK

MINERALIZATION & FILTRATION SOLUTIONS



You have chosen local water that has been enriched using the patented technology from BWT. You have decided against conventional bottled water, which has to be shipped many kilometers unnecessarily and is polluting the environment.

BWT Holding GmbH
Walter-Simmer-Straße 4, 5310 Mondsee
office@bwt.at | www.bwt.com



AQA DRINK FILTRATION AND MINERALIZATION FOR BWT WATER DISPENSERS

All BWT AQA drink filters refine your tap water in five filtration stages. During this process, particles, heavy metals (such as copper, lead and nickel), odour and other taste disturbing substances (such as chlorine) are reduced. This state-of-the-art filtration is just the preparation phase.



The real difference is the patented BWT mineralization technology. Local, filtered tap water, enriched by valuable minerals such as magnesium and zinc deliver perfect taste and help feel more balanced and resilient to stress. BWT makes tasty, locally-produced mineralized drinking water. For You and Planet Blue.

| | AQA drink Filtered Water | AQA drink Filtered Water | AQA drink Magnesium Mineralized Water | AQA drink Magnesium Mineralized Water | | AQA drink Magnesium Mineralized Water | AQA drink +ZINC Magnesium Mineralized Water | | | | |
|-------------------------------------|--|--|---|--|---------------|--|--|-----------------|-----------------|-------|-------|
| | SOFT TASTE | CARE | | PROTECT CARE | | CARE | PROTECT | | | | |
| | <p>Perfectly filtered and reliable limescale protection</p> <p>Protection against limescale deposits and particles. Filtration of off-flavour components and chlorine</p> | <p>Optimised taste and hygienic safety</p> <p>The filter reduces chlorine and organic substances. An ultrafiltration membrane retains 99,99% of the bacteria and reduces microplastics up to 0,1 µm</p> | <p>For perfect taste</p> <p>Filtered and mineralized with the valuable mineral magnesium</p> | <p>For perfect taste and hygiene without microplastics – filtered water, mineralized with valuable magnesium</p> <p>An ultrafiltration membrane removes 99,99% of the bacteria and reduces microplastics up to 0,1 µm</p> | | <p>Filtered and mineralized with valuable magnesium for perfect taste and hygienic safety even with soft of partially softened water</p> <p>An ultrafiltration membrane removes 99,99% of the bacteria and reduces microplastics up to 0,1 µm</p> | <p>For more energy, perfect taste and reliable limescale protection</p> <p>Filtered and enriched with zinc+magnesium. Additional reduction of limescale</p> | | | | |
| | ST100 | TC200 | M300 | MPC400 | MPC500 | MCS400 | Zn+MP200 | Zn+MP300 | Zn+MP400 | | |
| Item n° | 125626565 | 812655 | 812592 | 812595 | 812596 | 125258689 | 125258673 | 125258674 | 125258675 | | |
| Magnesium release * | - | - | ✓ | ✓ | | ✓ | ✓ | | | | |
| Zinc release | - | - | - | - | | - | ✓ | | | | |
| Chlorine reduction | ✓ | ✓ | ✓ | ✓ | | ✓ | ✓ | | | | |
| Limescale protection | ✓ | - | - | ✓ | | - | ✓ | | | | |
| Bacteria and microplastic reduction | - | ✓ | - | ✓ | | ✓ | - | | | | |
| Capacity l | 630 | 8.000 | 3.330 | 1.710 | 1.600 | 2.500 | 2.250 | 5.000 | 600 | 1.400 | 2.100 |
| Capacity @ °dH / °dKH | @ 14 °dKH | - | @ 12 °dH | @ 12 °dH | | @ ≤ 5 °dH | @ 12 °dH | | | | |
| Applications | Hot & cold | Hot & cold | Cold | Cold | Hot & cold | Cold | Hot & cold | Hot & cold | Hot & cold | | |
| High (with filter head) mm | 300 | 385 | 445 | 500 | 527 | 500 | 385 | 445 | 500 | | |
| Ø mm | 88 | 88 | 110 | 130 | 147 | 130 | 88 | 110 | 130 | | |
| To be used with | AQA Fusion all@one | Water Dispensers & UTS | Water Dispensers & UTS | Water Dispensers & UTS | | Water Dispensers & UTS | Water Dispensers & UTS | | | | |

* Recommended for water hardness from 5° dH. Below this we recommend the use of the AQA drink MCS400 or AQA drink TC200

°dKH = german karbonate hardness / Capacities may deviate by up to ±5 % depending on the local water quality and volume flow.