

For You and Planet Blue.



*Luxury Water*®

---

[www.luxurywater.co.uk](http://www.luxurywater.co.uk)

---

# Hard Water Naturally

Rainwater is naturally 'soft', and only becomes 'hard' as it passes through layers of limestone and chalk while filtering down to the natural water table.

During this journey, the water absorbs natural minerals which gives it its distinctive taste. Some minerals, such as calcium and magnesium, also create the water's hard characteristics, and the more of these minerals that are absorbed, the harder the water will become.

The effects of hard water can be seen all around your home; limescale deposits in the kitchen and bathroom can damage delicate surfaces and leave unsightly marks on glass, ceramics and bright surfaces.

Your appliances and central heating system can suffer too – even a small amount of scale can reduce their efficiency and life expectancy.

Because hard water requires the use of more soap, detergent and shampoo in comparison to soft water, it can also affect the way you look and feel. Your clothes can be more difficult to rinse, while small deposits of scum can make fabrics feel coarse and harsh to the touch, your hair appear dull and your skin feel dry.

## Luxury Water

*Softened Water is excellent for your complexion, skin and hair.*

Luxury water from BWT offers a real difference that you can feel. Softened water brings a touch of luxury into your home, whether you choose to enjoy a revitalising shower or a hot, soothing bath, the richer lather and the softer suds created can help ease away the stresses of the day. Skin is left softer, smoother and feeling more replenished, whilst hair takes on a new shine.

Luxury water also brings a new found softness to your laundry. Soaps and detergents rinse out more easily, leaving clothes more cuddly, fluffier and softer to touch; a benefit the whole family can enjoy throughout the day, and you use much less detergent too!





---

HARD WATER



---

SOFT WATER



---

HARD WATER



---

SOFT WATER



## The Luxury of Time

HARD WATER MAKES CLEANING AROUND THE HOME MORE DIFFICULT. IT DEPOSITS UNSIGHTLY SCALE AND COMBINES WITH SOAP TO PRODUCE HARD TO REMOVE SCUM THAT CLINGS TO BATHS, BASINS, TILES AND TAPS, DULLING SURFACES AND REDUCING THE VALUE OF YOUR HOME.

## Banish Limescale

Tough on scale and scum, BWT luxury water will help keep your bathroom suite, shower and kitchen sparkling clean. Cleaning becomes easier, faster and much less of a chore. Shiny surfaces, bright chrome and ceramics in kitchens and bathrooms can be cleaned quickly with less scrubbing needed, eliminating the need for harsh chemical cleaners or expensive limescale removers.

With no limescale to mark, stain or permanently damage your expensive fittings, surfaces and appliances, luxury water helps maintain that 'New Look', protecting and prolonging the investment you have made in your home.



# Longer life

---

Just 6mm of scale can reduce the efficiency of a typical heating system by up to 38%. Scale can also reduce the life of appliances like your washing machine, dishwasher and iron.

The effects of hard water can also increase the amount you spend on soap, shampoo and detergents by up to 50%.

*Less time spent  
cleaning sinks and  
baths, surfaces  
sparkle like new.*

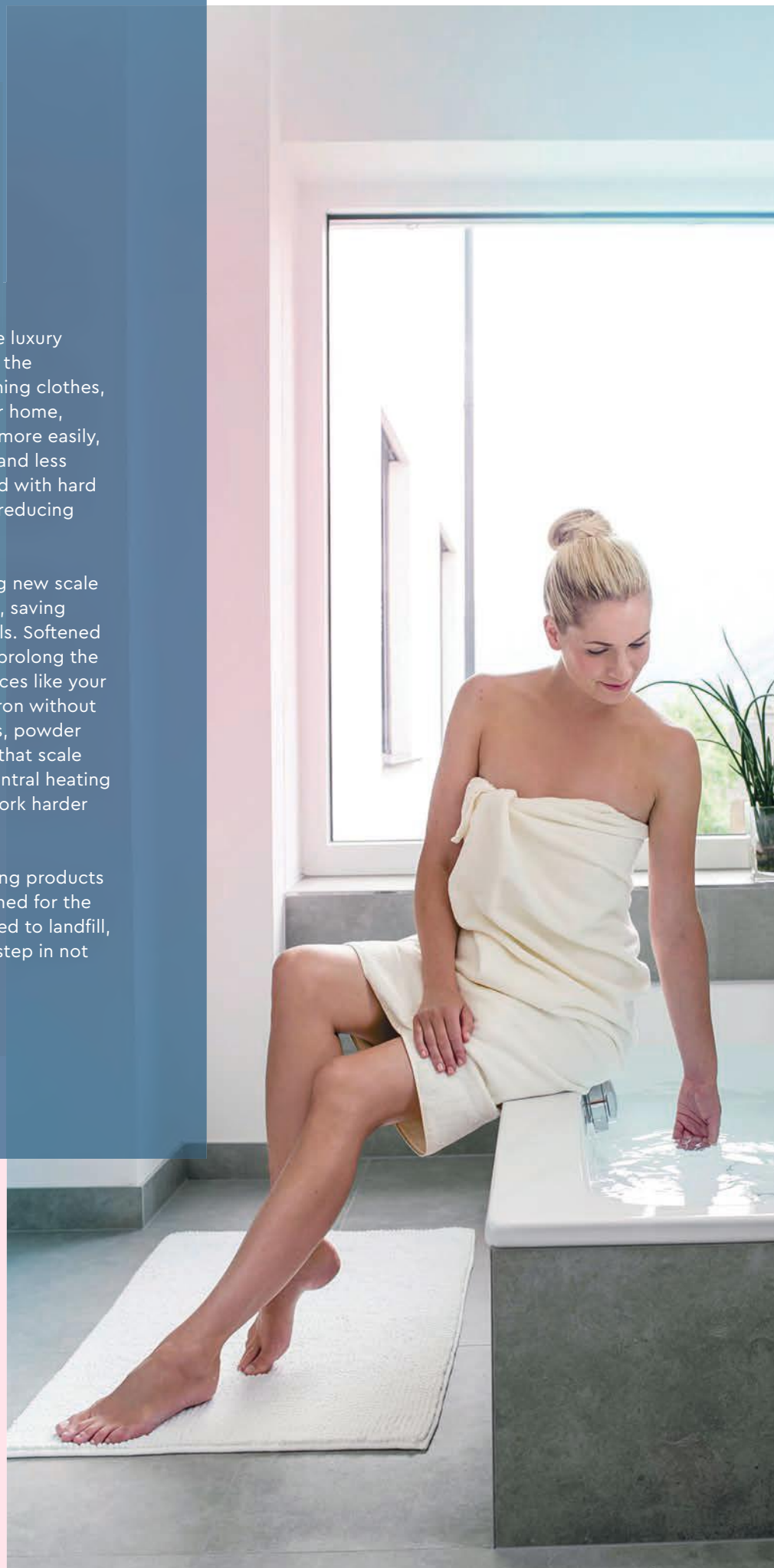


# Energy Saving

You will be amazed at the difference luxury water can make to your pocket and the environment. Whether you are washing clothes, bathing, showering or cleaning your home, softened water can help. Lathering more easily, you'll use less soap, less detergent and less conditioner than you normally would with hard water, protecting your clothes and reducing your monthly shopping bill.

Luxury water can help by preventing new scale forming and reducing existing scale, saving you money on energy and repair bills. Softened water can also help to protect and prolong the life expectancy of domestic appliances like your washing machine, dishwasher and iron without the need for water softening tablets, powder or gel. Government statistics show that scale deposits reduce the efficiency of central heating systems, meaning boilers have to work harder and in turn, use more fuel.

With less wasted energy and cleaning products required, fewer chemicals are destined for the drain, and with less bottles consigned to landfill, luxury water can also be a positive step in not only protecting your home, but the environment too.



## BWT Water Softeners ALL WITH UNIQUE @ HOME WARRANTIES, FOR CONVENIENT PIECE OF MIND.



### SOFTLUX 10 LITRE

A popular & compact water softener for homes where space is at a premium.



### SOFTLUX 14 LITRE

A family sized water softener for homes with multiple bathrooms.

*Shown with block salt lid*



|                               |                          |
|-------------------------------|--------------------------|
| Height x Depth x Width (mm)   | 532 x 480 x 270          |
| Salt Type                     | Block / Tablet           |
| Water used per regeneration   | <75                      |
| Country of manufacture        | UK                       |
| Warranty @ Home               | 5 Years parts and labour |
| Inlet/Outlet                  | 3/4"                     |
| UK Plumbing system compatible | Yes                      |

|                               |                          |
|-------------------------------|--------------------------|
| Height x Depth x Width (mm)   | 602 x 480 x 270          |
| Salt Type                     | Block / Tablet           |
| Water used per regeneration   | <80                      |
| Country of manufacture        | UK                       |
| Warranty @ Home               | 5 Years parts and labour |
| Inlet/Outlet                  | 3/4"                     |
| UK Plumbing system compatible | Yes                      |

Standard and high flow models available please ask in store for details:

**STANDARD:** SL10 and SL14 are supplied with 15mm hoses, 15mm valves and a low lid for use with tablet salt only.

**HIGH FLOW:** SL10P and SL14P are supplied with 22mm hoses, 22mm valves and 15mm reducers plus the option of using tablet or block salt.

## WHY CHOOSE BWT SOFTLUX

- Designed and built to exact British and European standards
- Low voltage control system for safety and ease of installation
- Optimum inlet and outlet sizing for reliable and consistent flow rates
- High capacity resin with uniform bead size for the maximum amount of softened water between regenerations
- Proportional brining regenerates only that part of the resin bed that has been exhausted for optimum water and salt efficiency
- Choice of models providing Luxury Water to suit your particular water usage and location requirements
- Advanced memory function for predictive regenerations based on your water usage patterns
- Audible low salt reminder
- Simple to set up and live with
- Block and Tablet salt models available
- Counter current regeneration reverses the water flow, ensuring that the whole resin bed is treated and regenerated efficiently

## HOW A WATER SOFTENER WORKS

1. A water softener works by passing hard water through a cylinder containing ion exchange resin
2. The resin consists of tiny beads that attract and retain the hardness minerals, allowing the now softened water into your household water supply.
3. Periodically, these resin beads are automatically cleaned and regenerated by rinsing with a small amount of brine (a salt solution).
4. All this takes place automatically, all that remains for you to do is occasionally top up with salt.



ADD A TOUCH OF LUXURY TO YOUR DRINKING WATER

## TRI -FLO PREMIUM DRINKING WATER SYSTEM

**Includes:** High quality Tri-Flo Tap  
Plus Premium Drinking Water  
Filter featuring.

- 5 stage filtration
- Highly efficient limescale protection
- Easy change filter
- Vertical or horizontal installation
- Automatic water shut off during filter replacement

System – **BWTDWFK-TRIFLO**  
Replacement cartridge – **PREMCART**



UPGRADE to...

### **MAGNESIUM MINERALISED WATER**

Thanks to the patented technology magnesium is released into the water during the filtration process. By adding magnesium to the water, the mineral balance is maintained. The result is a pH-value that connoisseurs of high-quality still mineral waters experience as especially tasty and soft.

Upgrade cartridge – **MAGCART**



## CONTACT

### **BWT UK Limited**

BWT House, The Gateway Centre,  
Coronation Road, High Wycombe,  
Buckinghamshire, HP12 3SU  
Tel: 01494 838 100  
Email: [sales@bwt-uk.co.uk](mailto:sales@bwt-uk.co.uk)

[bwt-uk.co.uk](http://bwt-uk.co.uk)

For You and Planet Blue.

**BWT**  
BEST WATER TECHNOLOGY