

# AQA drink Pure Filter installation set

EN

INSTALLATION AND  
OPERATING  
INSTRUCTIONS



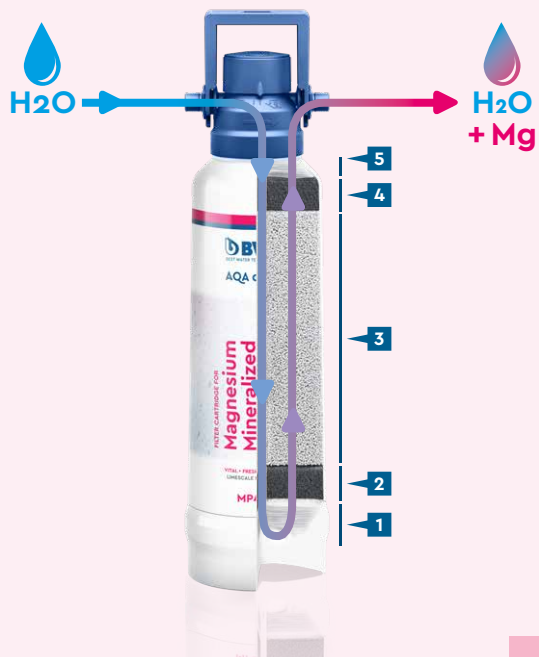


Fig. 1

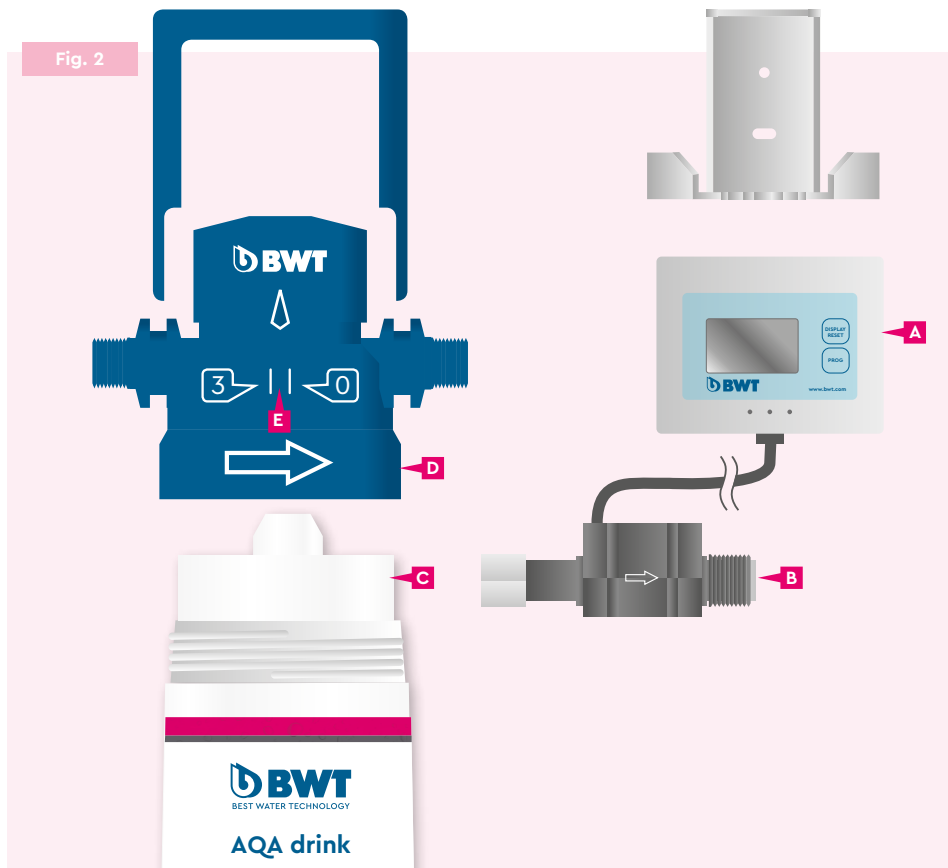


Fig. 2

## 1. TECHNICAL DATA

Dimensions and weights		MP200	AQA monitor
Height without bracket	mm	360	-
Height with bracket	mm	385	-
Filter cartridges Ø	mm	88	-
Counter dimensions (W x H x D)	mm	-	80 x 47 x 30
Operating conditions		MP200	AQA monitor
Connection thread (in out)		3/8" (BSP male)	3/8" union nut (internal thread)   3/8" external thread
Nominal flow rate	l/h	180	-
Operating pressure	bar	2 to 8	-
Input water pressure	bar	>1.2	2-8
Pressure loss at 180 l/h <sup>1</sup>	bar	0.60	-
Water inlet temperature (min./max.)	°C	+4 to +30	+4 to +30
Ambient temperature (min./max.)	°C	+4 to +40	+4 to +40
Flow capacity	l/min	-	0.8 to 15
Flow deviation	%	-	+/-5
Mounting position		horizontal/vertical	horizontal
Minimum flush volume	l	2	-

<sup>1</sup> With bypass setting "2" and mounted on both sides with a 1.5-m-long DN8 hose at the inlet and outlet.

## 2. FILTER CAPACITY AND BYPASS SETTING

According to water quality	Total hardness in °dh (German hardness level) <sup>1</sup>	Bypass settings <sup>2</sup>	MP200
soft	<8	3	900 l
medium	8 to 14	3	470 l
hard	15 to 21	3	280 l
Very hard	22 to 28	2	160 l
Very, very hard	>28	2	140 l

<sup>1</sup> While the specified filter capacity is valid for defined test conditions, the actual capacity during operation may be higher or lower. Replace filter when the aforementioned capacity has been reached but at least every 12 months.

<sup>2</sup> Adjust on the filter head.



### Note:

The local water hardness level must be known in order to adjust the AQA monitor and bypass. This information can be requested from the water supplier or determined by means of a quick test.

### 3. USE AND DESIGN

The BWT AQA drink MP200 filter cartridge refines your tap water into Magnesium Mineralized Water in five filtration stages (see Fig. 1).

- 1 Prefiltration filters out particles such as sand or rust.
- 2 Activated carbon pre-filtration removes organic matter to protect the ion exchanger.
- 3 The high-performance ion exchanger reduces the overall hardness of drinking water and thus protects equipment from limescale deposits. It releases the valuable mineral magnesium and reduces heavy metals such as copper, lead and nickel.
- 4 Activated carbon filtration reduces odour and substances that lend water an unpleasant taste, such as chlorine.
- 5 Fine filtration captures even the finest particles.

A filter change indicator – the AQA monitor – is included in the set to ensure the best possible use of the filter. This programmable counter **A** unit is connected to the filter **C** via a flow sensor **B** (see Fig. 2).

The AQA drink filter head **D** is fitted with an Aquastop, which prevents unintentional leakage of water during filter installation. The waste – i.e. that amount of water that can only be filtered out by steps 4 and 5 (Fig. 1) – can be adjusted by way of the bypass function **E** on the filter head (see the Installation Instructions, Page 29).



#### Note:

The filtered drinking water corresponds to Liquid Category 2 in accordance with EN 1717.  
The BWT AQA drink filter head is only suitable for original BWT AQA drink filter cartridges.

### 4. OPERATING AND SAFETY INSTRUCTIONS

- » The BWT filter cartridge can only be used with cold water that meets the legal requirements for drinking water quality.
- » Comply with all country-specific installation regulations (e.g. DIN 1988, EN 1717), general hygiene conditions and technical data relating to the protection of drinking water.
- » Two non-return valves in accordance with DIN EN 13959 are integrated in the filter head.
- » The installation location must be protected against frost and direct sunlight. Do not install the unit near any sources of heat or open flame.
- » The filter system must not come in contact with or be exposed to any chemicals, solvents and vapours.
- » The filter head must never be under water mains pressure for long periods without the filter cartridge mounted in place.
- » The filter head must be replaced after 5 years in service.
- » The filter system can be operated in either a vertical or horizontal position:
  - Vertical: Leave approx. 65 mm clearance above the ground to facilitate filter replacement.
  - Horizontal: The filter cartridge must rest on the ground.
- » If the filter system is used with an AQA drink Pure tap, a slight overrun may occur when the AQA drink filter cartridge is put into operation. This subsides as soon as the filter cartridge is completely vented, at the latest after a few days.

- » If the authorities require tap water to be boiled, this requirement also applies to filtered water. Once the drinking water supply has been approved again as harmless, the filter cartridge must be replaced and all hoses and connections cleaned.
- » For certain groups of people (e.g. immunocompromised persons, infants) it is recommended to boil tap water before consumption. This also applies to filtered water.
- » Breaks in operation:
  - Lasting 2 days or longer: Rinse filter system with 2 litres of water
  - Lasting 4 weeks or longer: Filter cartridge must be replaced

### 5. TROUBLESHOOTING

Fault	Cause	Troubleshooting
Dispensing of filtered water is not possible	Water supply or other shut-off valves closed	Check shut-off valves and open if necessary
	Filter cartridge not completely screwed into the filter head	Unscrew the filter cartridge by half a turn, and then re-screw it into place to the proper stop.
	Filter head incorrectly mounted	Direction of flow – Check the direction arrow on filter head and reverse it if necessary
Low water throughput (permeability)	System pressure is too low	Check system pressure
Aquastop in filter head is leaky when the filter cartridge is removed	Deposition of foreign particles in the Aquastop	Bleed the system with built-in filter cartridge
Screw connection leaking	Gasket defective	Check the sealing gasket, and replace it with a new one if necessary
Air bubbles	Not completely vented	Repeat venting
Milky/white water	Process-related formation of carbonic acid, which emerges as small white bubbles	After approx. 5 min. the turbidity disappears

### 6. DISPOSAL

If local collection points are available, return exhausted filter cartridges, other parts and packaging for recycling in the interest of environmental protection. Observe applicable local regulations!

#### Dispose of conventional and rechargeable batteries in an environmentally friendly manner.



Batteries are marked with the crossed-out dustbin symbol. It is prohibited to dispose of batteries with household waste. Batteries containing harmful substances are marked with the chemical symbols Cd for cadmium, Hg for mercury and Pb for lead.

Both conventional and rechargeable batteries contain harmful substances and valuable resources. Every consumer is legally obligated to return all used and depleted conventional and rechargeable batteries to an approved collection point. This ensures that the batteries are recycled in an environmentally friendly and resource-conserving manner. After use, you can return batteries free of charge to the point of sale or in its immediate vicinity. Defective batteries may be disposed of at a local materials recycling centre.

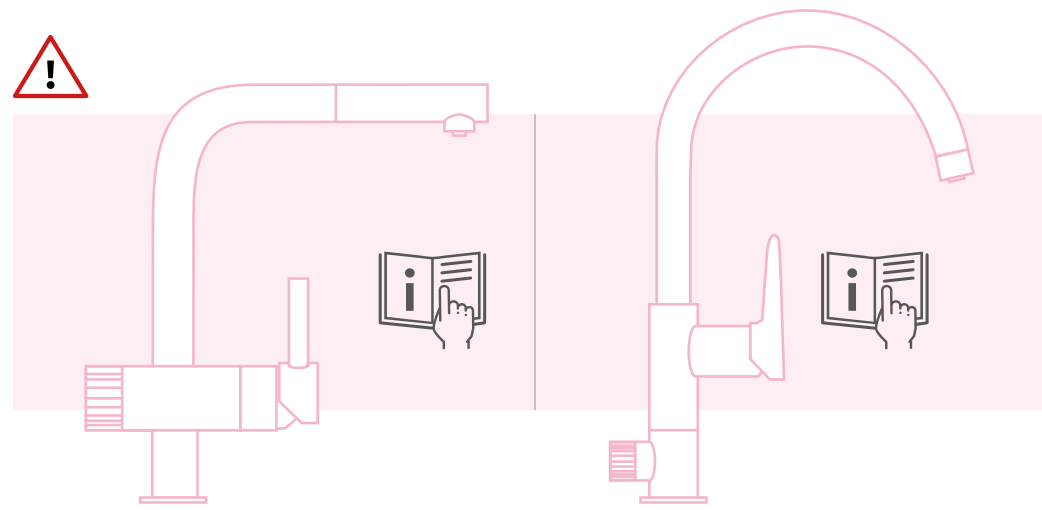
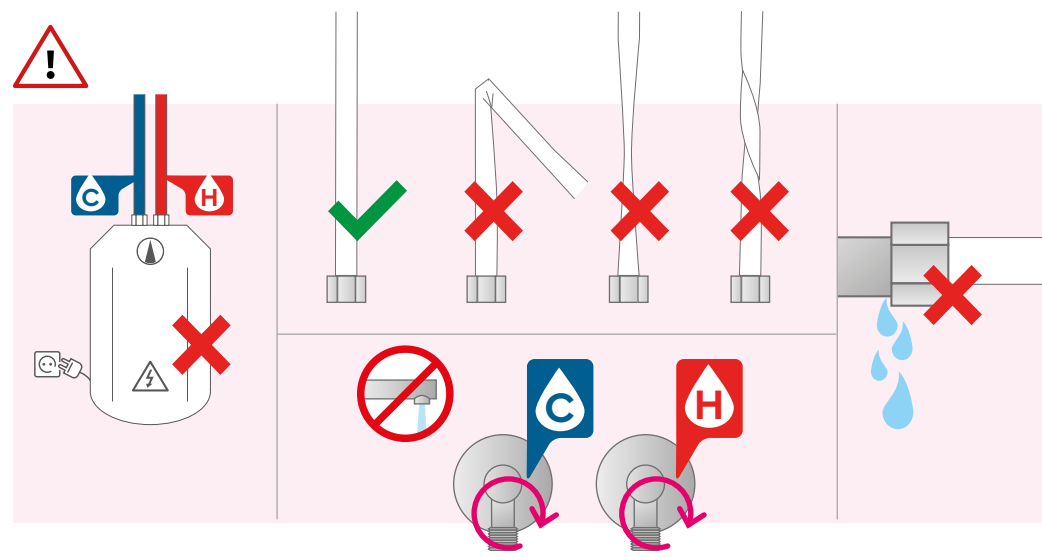
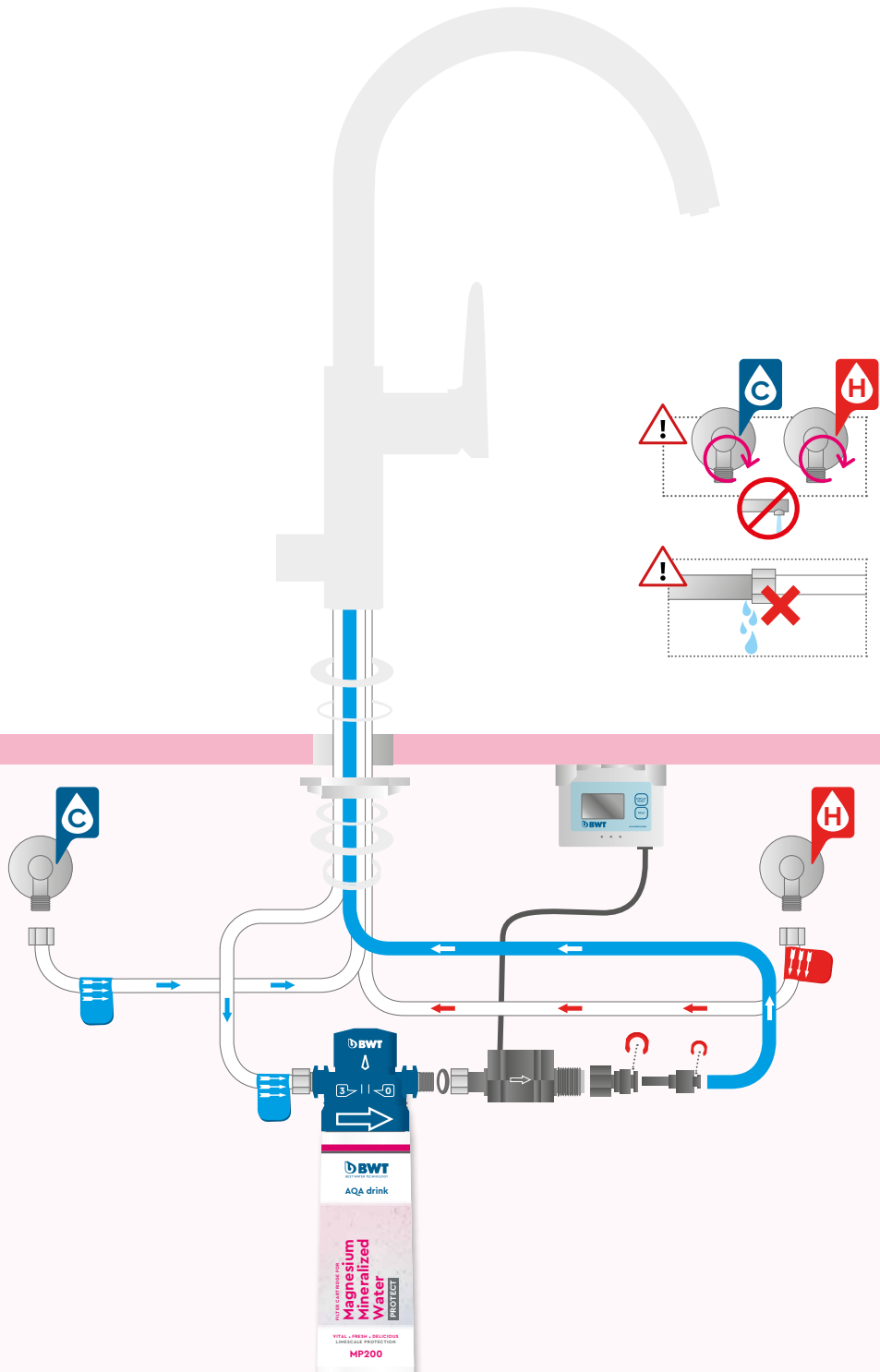
#### Please remove batteries.

Prior to disposing of old electrical appliances or devices, please remove any existing conventional or rechargeable batteries that are easily accessible or not fully enclosed within the appliance or device. Dispose of these batteries as described above.

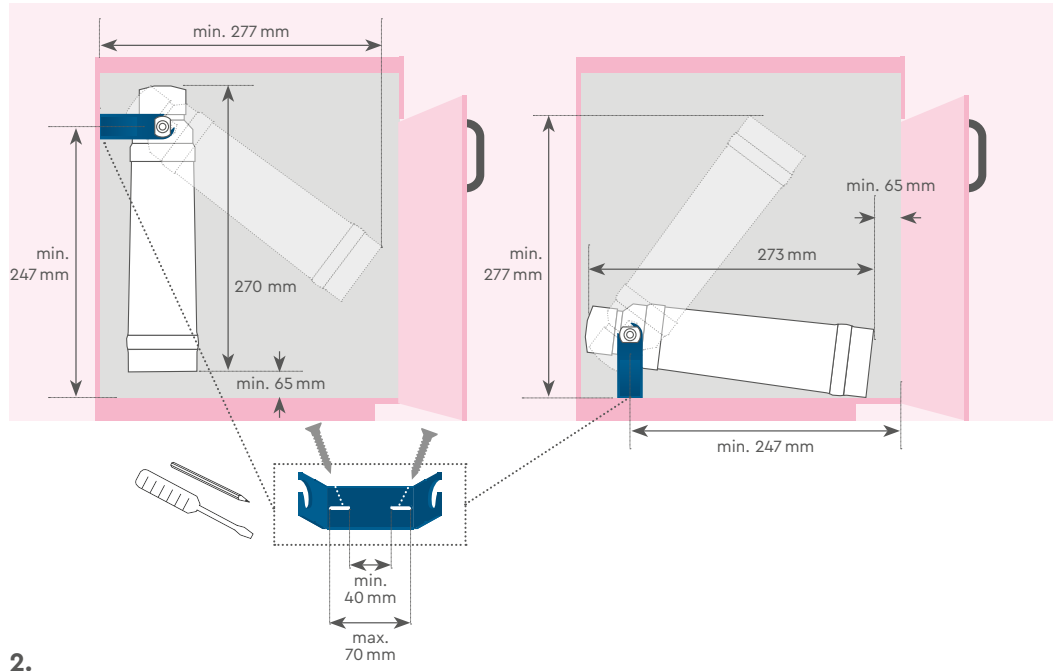


# Chapter 7

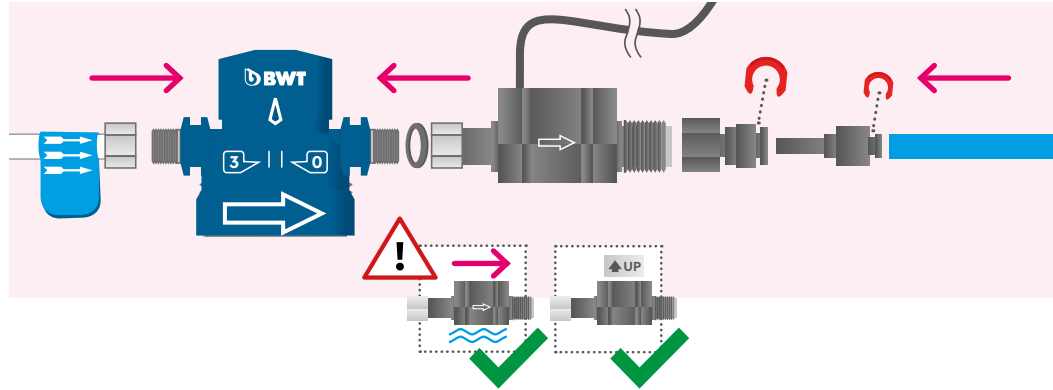
EN INSTALL FILTER SYSTEM



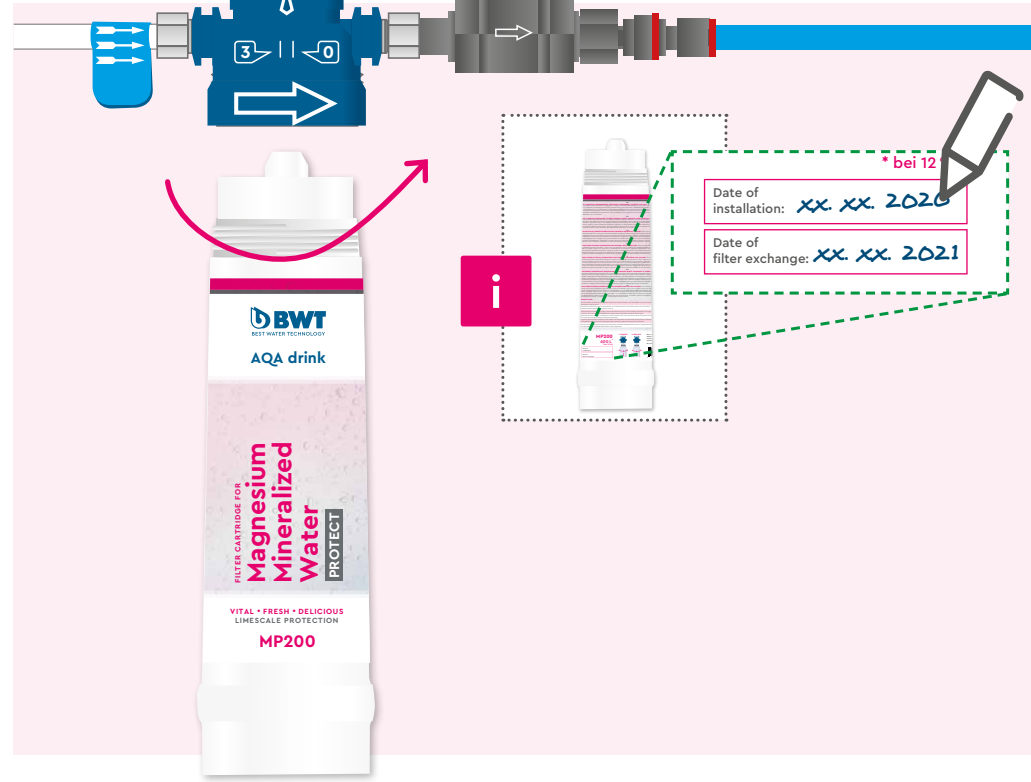
1.



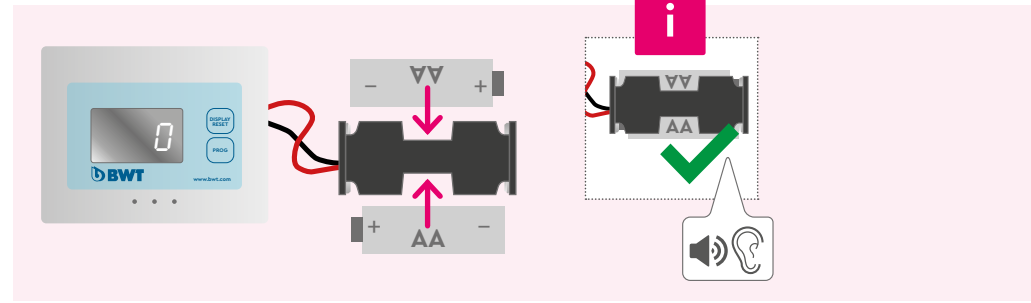
2.



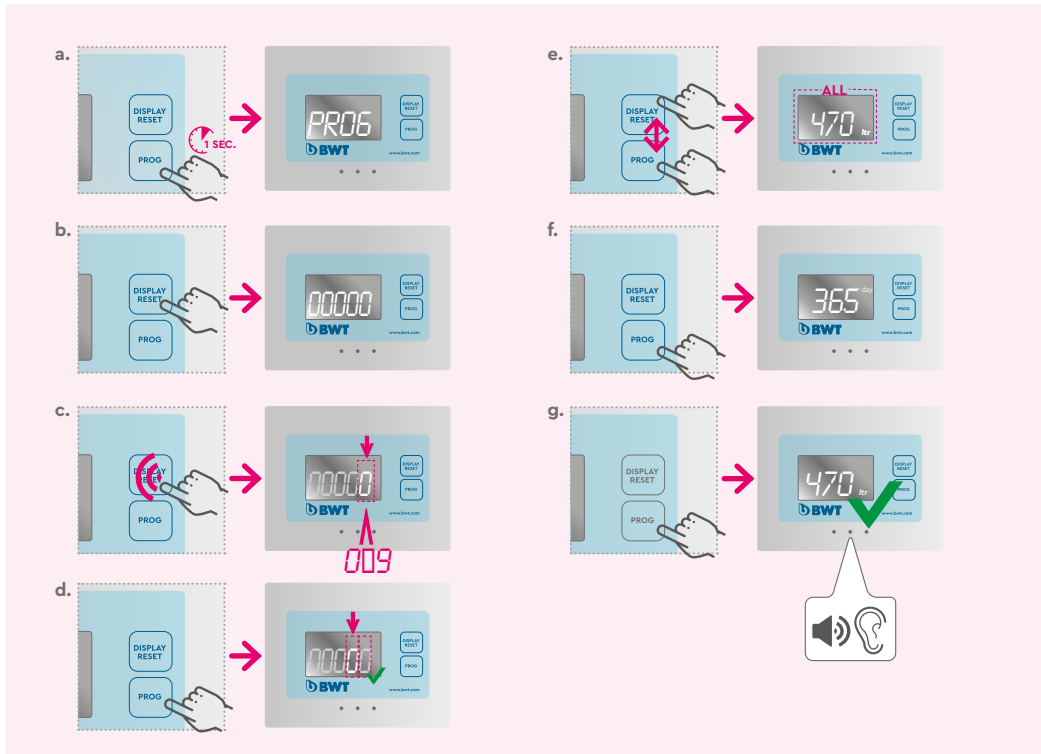
3.



4.



5.



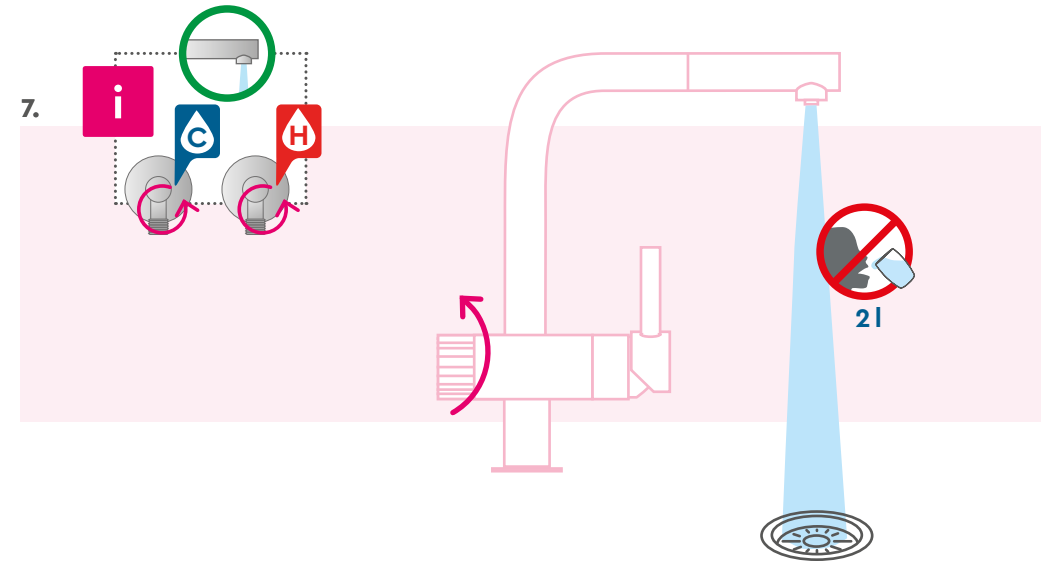
6.

**Bypass setting:**

°dTh	Bypass
<8	3
8-14	3
15-21	3
22-28	2
>28	2

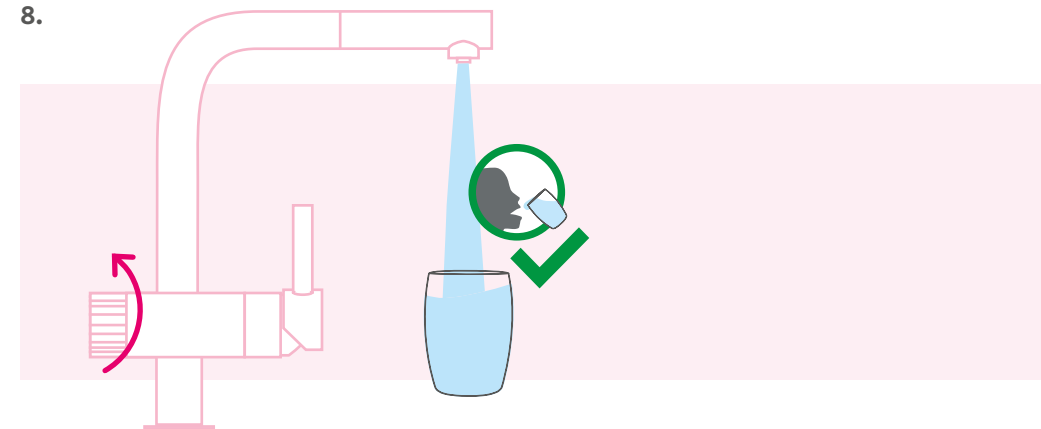
**Installation**  
www.bwt.com

7.



EN Flush the filter cartridge with 2 litres of water to vent it. The rinse water should be discarded.

8.





**BWT UK Limited**

BWT House, The Gateway Centre, Coronation Road,  
High Wycombe, Buckinghamshire. HP12 3SU

☎ 04194 838 100

✉ [enquiries@bwt-uk.co.uk](mailto:enquiries@bwt-uk.co.uk)

*bwt.com*

FOR YOU AND PLANET BLUE.