

AQA Monitor

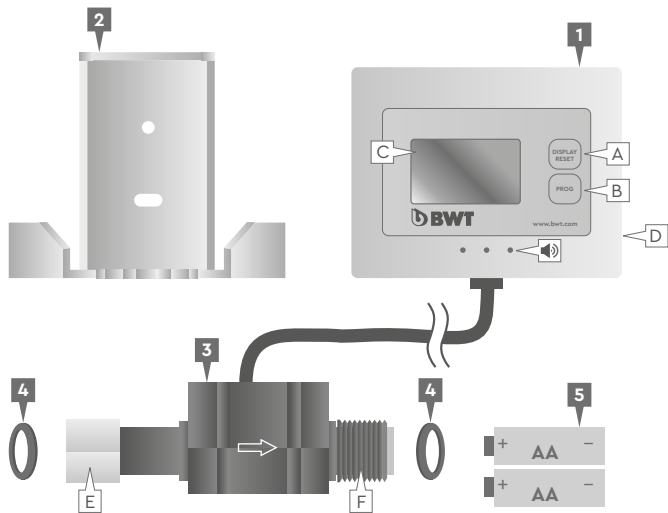
FILTER CAPACITY CONTROL UNIT



BWT
BEST WATER TECHNOLOGY

Installation and operating
instructions

EN



EN Delivery scope

- 1 1x Counting unit
- 2 1x Bracket for wall installation
- 3 1x Sensor unit – flow rate
- 4 2x Flat seals
- 5 2x AA batteries
- A "DISPLAY/RESET" button
- B "PROG" button
- C Display
- D Cover of battery compartment
- E Port input
- F Port output

Safety regulations

- » Read through the Operating Instructions carefully before the start of operation. Perform all steps exactly as indicated in the instructions.
- » Adhere to all directions and illustrations.
- » Only use standard batteries of the type AA.
- » Ensure that the battery cover is properly fitted. Otherwise, debris and moisture could penetrate.
- » In the following cases, the power supply must be disconnected immediately (remove battery) and a technician must be called:
 - Water or other liquids have penetrated into the appliance
 - The appliance does not function properly even though all of the directions provided in these Operating Instructions have been adhered to exactly
 - If the appliance falls and the housing is damaged
 - If the indicator of the appliance does not function
 - If the PROG or RESET buttons do not function
- » Do not attempt to repair anything yourself or to accomplish anything by randomly pressing the PROG or RESET buttons.
- » If there is no power supply, the installed electronics assembly will not function. If the appliance is operated without a battery or with a depleted battery, it is not possible to make any measurements.

Installation information

- » The installed lengths of the AQA Monitor and the bending radius of the hoses are adhered to
- » The flow direction (indicated on the filter head) is adhered to
- » The measuring unit is installed horizontally
- » The appliance is not exposed to any mechanical strain
- » No rapidly pulsating medium stimulus
- » No pressure reversals
- » No air in the system
- » Take the installation position of the AQA Monitor into account
- » Min./max. flow rate should lie in the linear area of the selected AQA Monitor
- » Appropriate and periodic cleaning
- » Protect the battery and electrical contacts from moisture
- » Inductive malfunctioning must be avoided
- » The number of impulses per litre may vary according to medium and installation
- » We recommend calibration of the impulse/litre value with the overall installation

Guarantee

In the event of a fault during the guarantee period, please contact your contracting partner.

Operator Duties

- » You have purchased a long-lasting and service-friendly product. However, every technical appliance requires regular service work to maintain correct functioning.
- » Sensor unit: check daily for leaks.
- » Battery: If the battery must be replaced, this will be indicated in the display.



Technical Data:

Connection thread (IN/OUT):	3/8" nut x 3/8" connection thread
Intake pressure (min/max):	2 – 8 bar
Flow capacity:	0.8 – 15 l/min
Flow rate deviations:	+/- 5%
Water temperature (min/max):	+4 – +30 °C
Ambient temperature (min/max):	+4 – +40 °C
Dimensions (L x W x H):	80 x 47 x 30 mm
Installation position:	horizontal



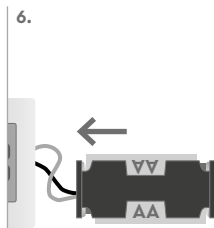
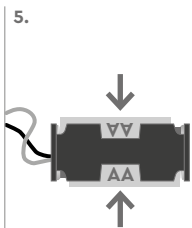
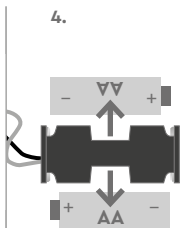
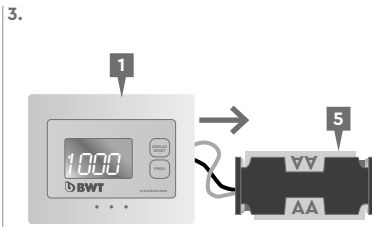
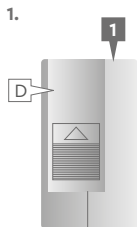
1.

EN

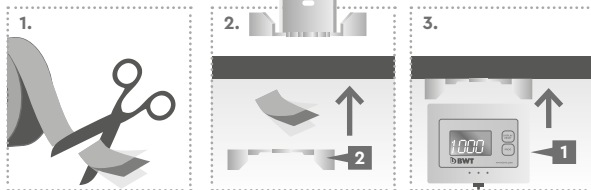
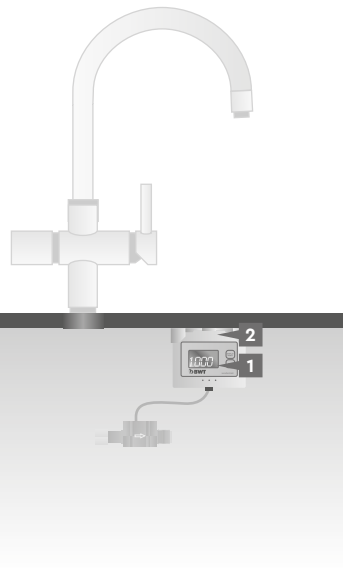
a


Insert and change of battery

Installation

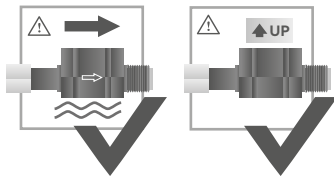
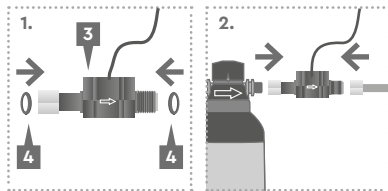
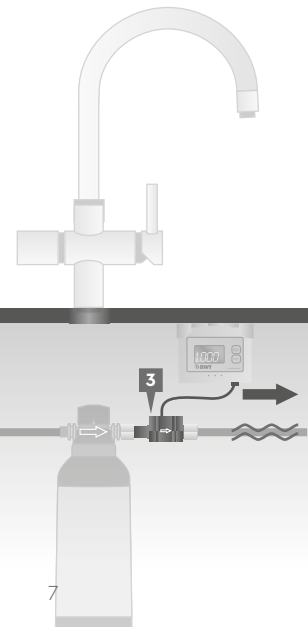



b **EN** Install counting unit



 **EN** Place counting unit on an easy accessible and well-visible position..

c **EN** Install sensor unit – flow rate



 **EN** When installing, the unit the water supply must be closed. If the connections have been carried out professionally, check the system for leaks. If it is not tight, check the connections again.



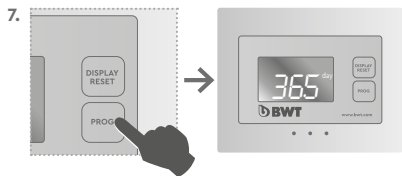
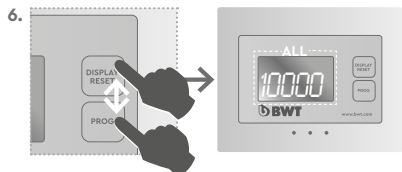
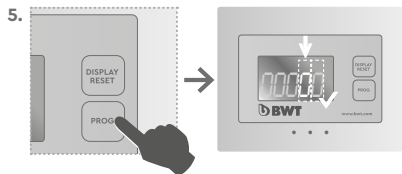
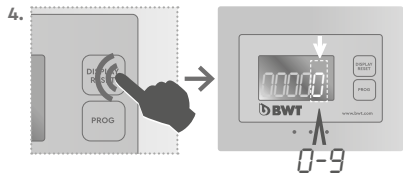
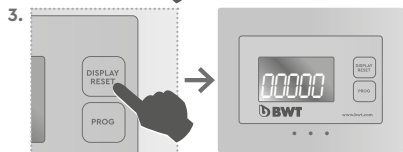
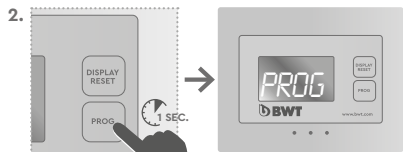
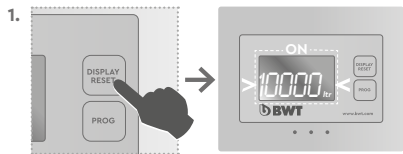
a

Counting unit setting and function

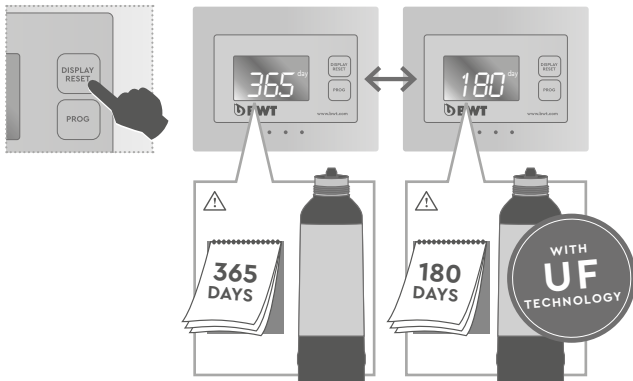
⚠ Filter capacity of the cartridge must be known and can be found in the installation and operation instruction.

ad. 4: Set the desired value by pressing the "DISPLAY/RESET" button.

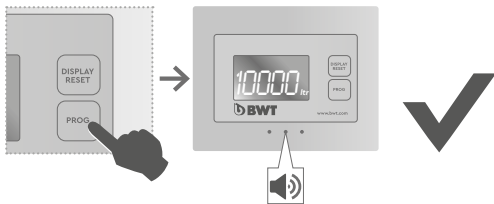
ad. 5: Press the "PROG" button once to switch to the next digit. Repeat steps 4 and 5 until all digits have been set.



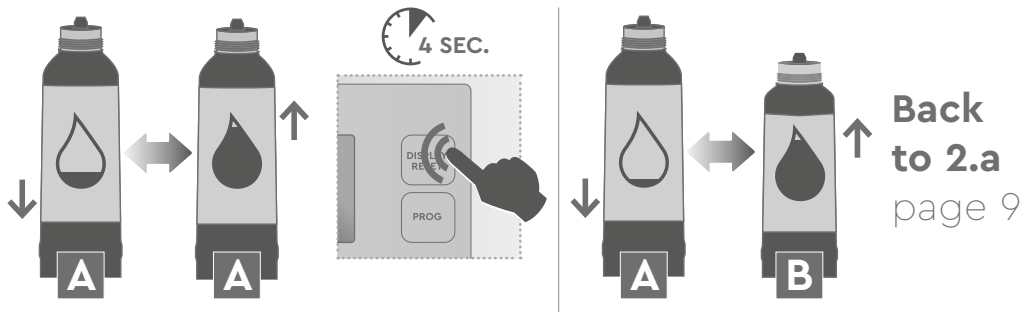
8.



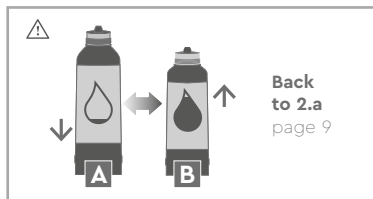
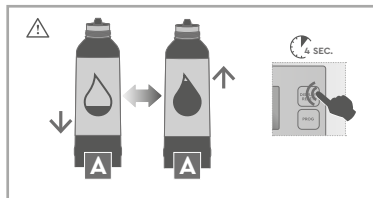
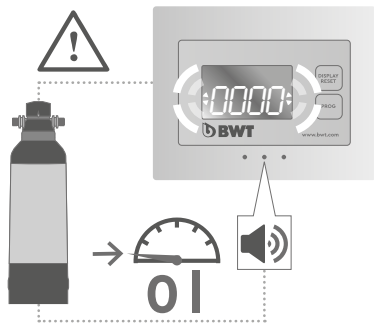
9.

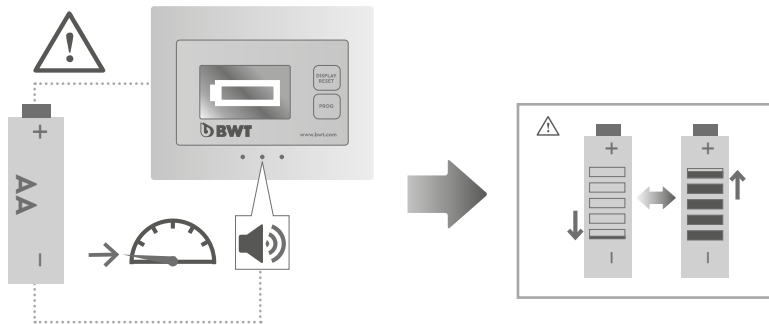


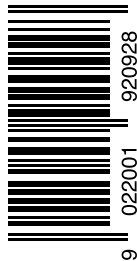
b Resetting the filter capacity (after water filter replacement)



c Function counting unit







10/2020 – UK Version

Bestell-Nummer: 812641
Order number:



BWT UK Limited

BWT House, The Gateway Centre, Coronation Road,
High Wycombe, Buckinghamshire. HP12 3SU

☎ 04194838100

✉ enquiries@bwt-uk.co.uk

bwt.com
