



Taste Fresh Protection Plus Drinking Water Filter System Installation and Operating Instructions Model: TFPPKIT

The BWT Tastefresh Protection Plus Filtration Kit combines a Resin cartridge with a Carbon Block cartridge in duplex white housings. The Resin cartridge reduces hardness minerals. The Resin cartridge should be replaced every 4-6 months depending on the quality and hardness of the incoming water supply. The Carbon Block cartridge reduces Bad Taste & Odours, Chlorine, Pesticides (VOCs), Cryptosporidium, Bacteria, Petroleum Solvents and Sediment down to 0.5 Micron.

The BWT Tastefresh Protection Plus system kit contains all the necessary screws and fittings required for easy installation. All parts are listed below:

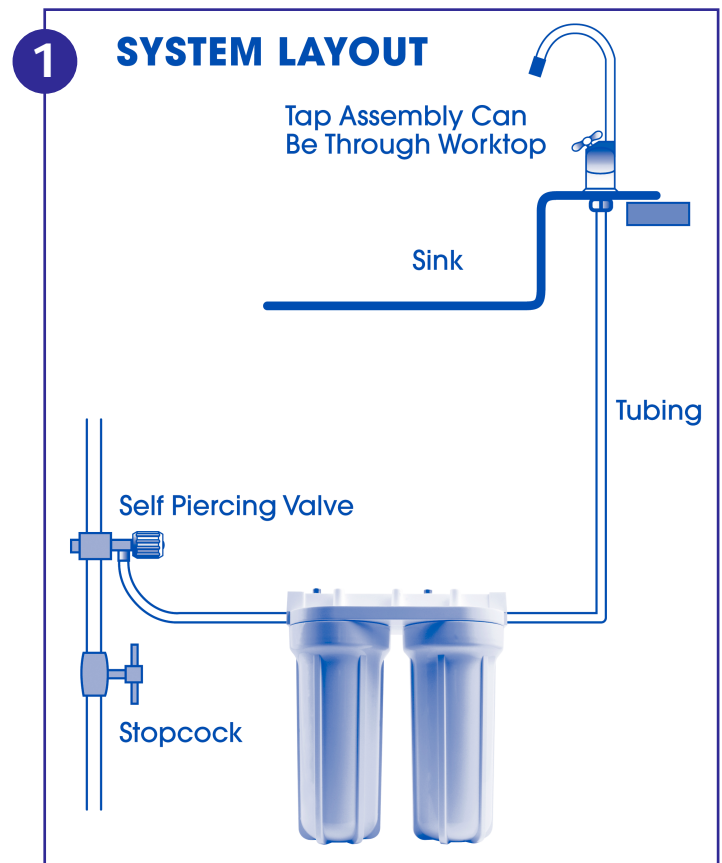
- Self Piercing Valve with red tube attached
- 1 x Duplex white cartridge housings
- 2 x disposable cartridges (Carbon Block & Resin)
- Quarter turn Tap with blue tube attached
- Tap fittings
- 1 x fixing duplex fixing bracket
- 6 x screws for attaching housings to fixing bracket
- 1 x roll of sealant tape

Assembly

- Using the six chrome screws provided, attach the white housings to the white fixing bracket.
- Using sealant tape to form a watertight seal, attach the straight connector into the inlet and outlet of the housing.

Installation

- Fit to cold water lines only.
- Turn off water supply and drain the water from the system by leaving a tap open.
- Using a 13 mm ($\frac{1}{2}$ ") bit, drill a hole into the sink top or work surface to accommodate the tap (rubber washers are provided to prevent damage to the surfaces). Assemble as shown in Fig 1.
- Identify the cold-water feed and attach the self-piercing saddle valve as shown in Fig 2.
- Locate the bracketed housings so that the flexible tube from the self-piercing valve reaches the inlet of the left hand housing, and the blue tube from the tap reaches the outlet of the right hand housing.
- To facilitate the easy changing of cartridges, sufficient room should be left underneath the cartridge housings for their removal (30mm minimum).
- Attach the fixing bracket to a firm surface.
- Attach the red tube into the inlet and the blue tube into the outlet of the cartridge housings by firmly pushing the tube into the white adapters.



- Unscrew each of the bowls in turn, remove packing from cartridges and place the cartridges into the bowls.

Please insure that the resin cartridge is situated in the left hand housing with the red tube attached). Tighten the bowls. Check that the 'O' ring washer is correctly seated inside rim of the cartridge housing. Cartridge changes will be easier if the 'O' ring is lubricated with Silicon grease.

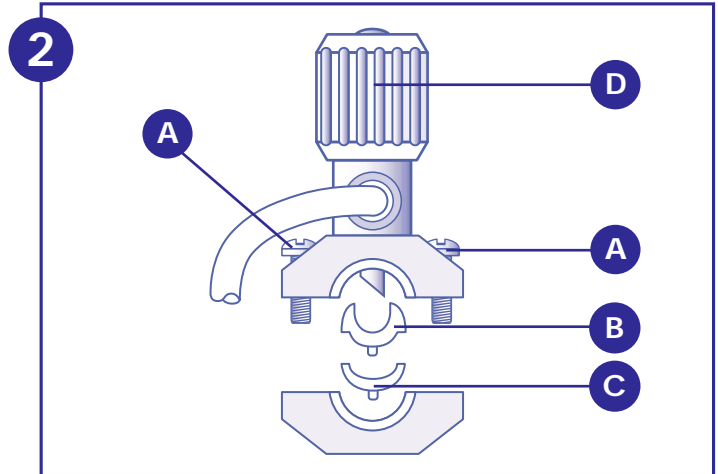
- On completion of installation, turn water supply on, press the red buttons on the top of the housings to release any trapped air and check for leaks.
- The maximum working pressure 5 BAR.

Installing the Saddle Valve

Before carrying out any installation **TURN OFF THE WATER SUPPLY AT THE MAIN STOP COCK.**

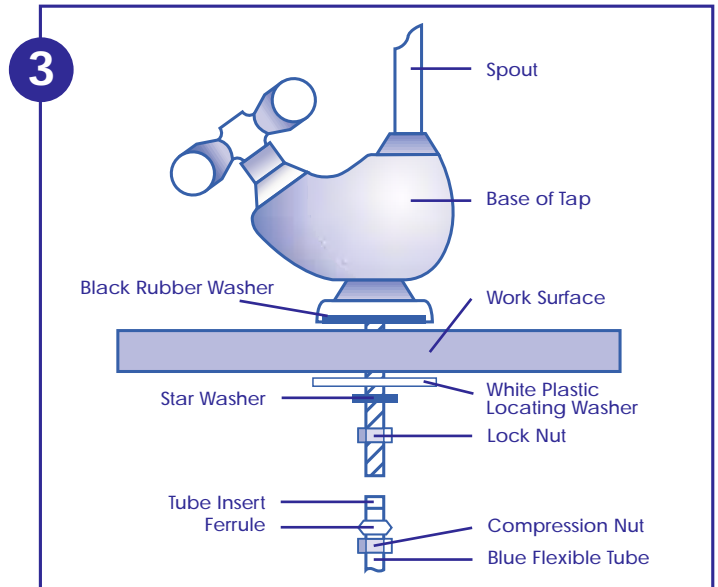
NOTE: Saddle valve must be installed on a 50 mm (2") long, straight-walled section of 10 mm (3/8") to 23 mm (7/8") steel, brass, copper, or PVC pipe.

- (A) Select a straight section of the water supply line.
- (B) Clamp around water line using two clamping screws (A). Tighten evenly.
- Note:** Use saddles (B) & (C) for 10 mm (3/8") O.D. pipe, only saddle (C) for 13 mm (1/2") O.D. pipe, or no saddles for 15 mm (5/8") pipe.
- (C) Connect the end of the tubing to the filter system water input.
- (D) Turn adjustment knob (D) clockwise as far as it will go to pierce the water line.
- (E) Back out knob counter clockwise as far as it will go for full flow. Adjust down for desired flow.



Installation Instructions for the Quarter Turn Tap

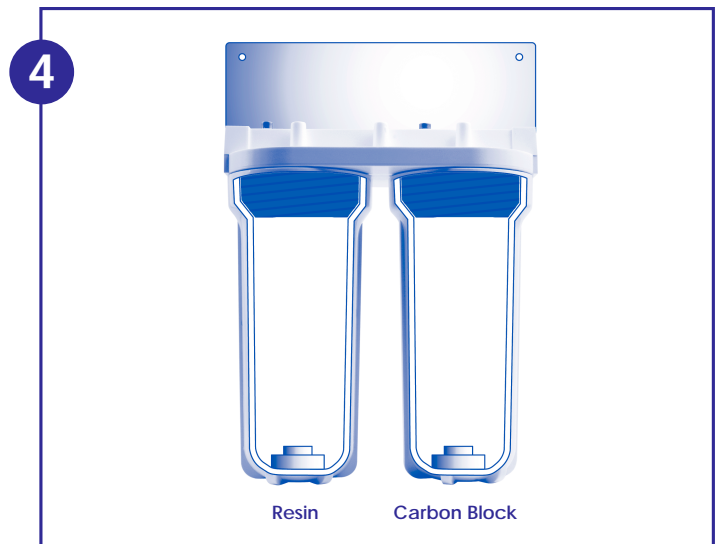
- The tap should be positioned on a work surface adjacent to a sink where the spout can properly discharge water into the basin.
- Using a pencil, mark the work surface to indicate the centre of the tap.
- Drill a 1/2" hole where marked on the work surface.
- Insert the black rubber washer into the base of the tap.
- Insert the threaded section of the tap body into the 1/2" hole.
- Assemble the washers and lock nut on the threaded section as shown above.
- Tighten the lock nut to prevent the tap from moving. Do not over tighten.
- Ensure compression nut, ferrule and tub insert are positioned on the blue flexible tube as shown in Fig 3.
- Insert the open end of the blue flexible tube assembly into the base of the threaded section of the tap.
- Tighten the compression nut to ensure a watertight seal. Do not over tighten.
- Turn on the supply to the tap. Check for leaks.



How to change your Duplex Cartridges

- Shut off water supply
- Turn Quarter Turn Tap to release water pressure in the Flexible Tube.
- Remove filter bowls (looking from the top rotate the bowl clockwise)
- Remove and carefully dispose of the old filter cartridges (Resin & Carbon Block).
- To make the bowl easier to unscrew it is recommended that the O-ring rubber washer fitted inside the bowl be coated with silicone grease.
- Remove any protective wrappers, position new cartridges in each bowl and tighten – **Please insure that the resin cartridge is situated in the left hand housing with the red tube attached, as shown in Fig 4.**
- Turn on water; depress red buttons on the top of the housings to release any air. Check for leaks. Flush approx. 15-20 litres of water to clear initial discoloration.

IMPORTANT! Do not allow the BWT Tastefresh Protection Plus System to freeze.



Customer Help Line:

01494 838 100

Monday to Friday 08.30 – 17.00 UK Only.

BWT UK Limited, BWT House, The Gateway Centre, Coronation Road, High Wycombe, Buckinghamshire, HP12 3SU United Kingdom.

Tel No: 01494 838100 **Fax No:** 01494 838101

E-mail: enquiries@bwt-uk.co.uk

All trademarks are protected under European law and must not be reproduced by third parties without express permission of BWT UK Limited in writing. As part of BWT's policy of constant product development, BWT reserves the right to alter product specifications without prior notice.

Guarantee

This product is guaranteed for the period of one year from the date of purchase against any manufacturing fault. The guarantee is only valid if the product has been installed and used in accordance with the manufacturers instructions and has not been dismantled or interfered with in any way. Damage caused to the product or by the product as a result of failure to use the product in accordance with the manufacturers instructions is not covered by this guarantee. Under this guarantee we undertake at our discretion to repair or replace free of charge the product or any part thereof that is found to be faulty. Costs associated with the fitting of a replacement product or part or the removal of the product are not covered by this guarantee. Loss or damage caused by the product (including consequential loss) is not covered by this guarantee. This guarantee does not affect your statutory rights.